

# SIEMENS

## SIMATIC HMI

### WinCC flexible 2008 Installation guide

System Manual

Installation

1

Startup

2

Licenses and Open Source  
Software

3

Appendix

4

Printout of the Online Help

06/2008

Printout of the Online Help

## Safety Guidelines

This manual contains notices you have to observe in order to ensure your personal safety, as well as to prevent damage to property. The notices referring to your personal safety are highlighted in the manual by a safety alert symbol, notices referring only to property damage have no safety alert symbol. These notices shown below are graded according to the degree of danger.

<b>⚠ DANGER</b>
indicates that death or severe personal injury <b>will</b> result if proper precautions are not taken.
<b>⚠ WARNING</b>
indicates that death or severe personal injury <b>may</b> result if proper precautions are not taken.
<b>⚠ CAUTION</b>
with a safety alert symbol, indicates that minor personal injury can result if proper precautions are not taken.
<b>CAUTION</b>
without a safety alert symbol, indicates that property damage can result if proper precautions are not taken.
<b>NOTICE</b>
indicates that an unintended result or situation can occur if the corresponding information is not taken into account.

If more than one degree of danger is present, the warning notice representing the highest degree of danger will be used. A notice warning of injury to persons with a safety alert symbol may also include a warning relating to property damage.

## Qualified Personnel

The device/system may only be set up and used in conjunction with this documentation. Commissioning and operation of a device/system may only be performed by **qualified personnel**. Within the context of the safety notes in this documentation qualified persons are defined as persons who are authorized to commission, ground and label devices, systems and circuits in accordance with established safety practices and standards.

## Prescribed Usage

Note the following:

<b>⚠ WARNING</b>
This device may only be used for the applications described in the catalog or the technical description and only in connection with devices or components from other manufacturers which have been approved or recommended by Siemens. Correct, reliable operation of the product requires proper transport, storage, positioning and assembly as well as careful operation and maintenance.

## Trademarks

All names identified by ® are registered trademarks of the Siemens AG. The remaining trademarks in this publication may be trademarks whose use by third parties for their own purposes could violate the rights of the owner.

## Disclaimer of Liability

We have reviewed the contents of this publication to ensure consistency with the hardware and software described. Since variance cannot be precluded entirely, we cannot guarantee full consistency. However, the information in this publication is reviewed regularly and any necessary corrections are included in subsequent editions.

# Table of contents

<b>1</b>	<b>Installation .....</b>	<b>5</b>
1.1	Installing WinCC flexible .....	5
1.1.1	System requirements .....	5
1.1.2	Installation overview.....	8
1.1.3	Components.....	10
1.1.4	Execute a minimum installation or full installation .....	12
1.1.5	Custom installation.....	15
1.1.6	Antivirus tools.....	19
1.1.7	Installing License Keys and options.....	20
1.1.8	Error-handling .....	21
1.2	Modifying the WinCC flexible installation.....	24
1.3	Options and Powerpack.....	25
1.3.1	Available options.....	25
1.3.2	Installing and uninstalling options .....	27
1.3.3	Powerpack .....	28
1.3.4	Installing a Powerpack.....	29
1.4	Licenses .....	30
1.4.1	License Keys and Authorizations.....	30
1.4.2	License types .....	31
1.4.3	Licensing of WinCC flexible Engineering Systems.....	32
1.4.4	Requesting License Keys from a license server.....	33
1.4.5	Licensing WinCC flexible Runtime on PC-based HMI devices.....	35
1.4.6	Licensing of HMI devices .....	36
1.4.7	Working with License Keys and Authorizations.....	37
1.4.8	Automation License Manager .....	40
1.5	Uninstalling WinCC flexible.....	43
1.5.1	Uninstalling WinCC flexible and components.....	43
1.5.2	Uninstalling License Keys and options .....	46
<b>2</b>	<b>Startup.....</b>	<b>49</b>
2.1	Overview .....	49
2.2	Run WinCC flexible .....	50
2.2.1	Run WinCC flexible.....	50
2.2.2	Starting WinCC flexible Runtime.....	51
2.2.3	Non-licensed mode .....	52
2.2.4	changing the user interface language in the ES.....	53
<b>3</b>	<b>Licenses and Open Source Software.....</b>	<b>55</b>
3.1	Open source software used in this product .....	55
3.2	License text of the GNU General Public License.....	57
3.3	License text of the Apache Software License, Version 1.1 .....	62
3.4	License text of the OpenSSL license.....	62

3.5	License text of the Gold Parser license .....	64
3.6	License text of the Common Public license .....	65
3.7	License text of the zlib license .....	68
3.8	License text of the libjpeg package license.....	69
3.9	License text of the Info-ZIP license .....	71
<b>4</b>	<b>Appendix.....</b>	<b>73</b>
4.1	Scope of delivery.....	73
	<b>Index.....</b>	<b>77</b>

# Installation

## 1.1 Installing WinCC flexible

### 1.1.1 System requirements

#### WinCC flexible Engineering System

WinCC flexible supports all PC platforms compatible with the common IBM/AT format. In order to work efficiently with WinCC flexible, you should adhere to the recommended values.

#### Approved operating systems

- Windows XP Professional SP2
- Windows XP Professional SP3
- Windows Vista Business 32-bit
- Windows Vista Ultimate 32-bit

System requirements		Operating system
RAM	min. 1 GB, 2 GB recommended	Windows XP
	min. 1.5 GB, 2 GB recommended	Windows Vista
Processor	min. Pentium IV or comparable processor with 1.6 GHz, Pentium M recommended	Windows XP
	min. Pentium IV or comparable processor with 1.6 GHz, Core 2 Duo recommended	Windows Vista
Graph	XGA 1024 x 768 WXGA for notebooks 16-bit color depth	Windows XP Windows Vista

System requirements		Operating system
Hard disk Free memory space	min. 2 GB with installation of a language.  The memory requirement for each additional language is 200 MB. If WinCC flexible is not installed on the system partition, the required memory requirement will be distributed as follows: <ul style="list-style-type: none"> <li>• approximately 700 MB to system partition</li> <li>• approximately 1.3 GB to installation partition and 200 MB for each additional language</li> </ul> Make allowances for additional free hard disk space required for the page file, for example. For further information, refer to your Windows documentation.	Windows XP Windows Vista
Internet browser	Microsoft Internet Explorer 6.0 SP1 or higher	Windows XP Windows Vista
To view documents in PDF format	Adobe Acrobat Reader 5.0 or higher Visit the Adobe homepage at " <a href="http://www.Adobe.com">http://www.Adobe.com</a> ."	Windows XP Windows Vista

The recommendations for WinCC flexible Engineering refer especially to the Engineering PC on which WinCC flexible projects can be processed integrated in STEP 7.

Opening several instances of WinCC flexible on your Engineering PC at the same time may result in more demanding hardware requirements.

When operating the configuration PC as access point to the process (Panel PC with WinCC flexible Runtime) set all performance schemes to unlimited continuous operation.

---

**Note**

**"Aero Glass Style" of Microsoft Vista**

You need a powerful graphics card for "Aero Glass Style;" requirements are DirectX9 capability and a separate graphics memory of 128MB.

The performance power of the graphics system architecture can significantly influence the performance power of WinCC flexible.

---

**Note****Asian user interface languages**

Installation of Asian language support in Windows is prerequisite for installing an Asian user interface language for WinCC flexible.

Under Windows XP:

To do so, open the Control Panel and select "Regional and Language Options". On the "Languages" tab, activate the check box "Install files for East Asian languages". Then click on "Details" under "Text Services and Input Languages". The dialog "Text Services and Input Languages" will open. On the "Settings" tab add the required default input language under the "Installed Services".

---

**Runtime behavior in Windows XP**

Operating system Windows XP or higher provides a Data Execution Prevention (DEP) function. Deactivate data execution prevention for a successful start of WinCC flexible and WinCC flexible Runtime. You have the option to enter WinCC flexible and WinCC flexible Runtime to an exception list. Check the settings by double-clicking the "System" entry in the Control Panel of the operating system. The "System Properties" dialog opens. Select the "Advanced" tab in the system properties and click "Settings" in the "Performance" section. The "Performance Options" dialog box opens. Select the "Data Execution Prevention" tab.

The option "Turn on DEP for essential Windows programs and services only" is selected by default and WinCC flexible or WinCC flexible Runtime can be started.

- "Data execution prevention for essential Windows programs and services only" enabled:  
You can start WinCC flexible or WinCC flexible Runtime.
- "Enable data execution prevention for all programs and services with the exception of the ones selected" enabled:

Enter WinCC flexible and WinCC flexible Runtime in the exception list.

Click the "Add" button and navigate to the WinCC flexible installation directory, e.g. <C:\Program Files\Siemens\SIMATIC WinCC flexible\WinCC flexible 2008 Runtime>. Select the "HmiES.exe" file and confirm your selection with "OK".

Repeat the same procedure for WinCC flexible Runtime. Navigate to the installation folder of WinCC flexible Runtime, for example, <C:\Programs\Siemens\SIMATIC WinCC flexible\WinCC flexible 2008 Runtime>. Select the file "HmiRTm.exe" and confirm your selection with "OK".

Close the dialog boxes and restart the station.

---

**Note**

You can also set the DEP options "AlwaysOn" or "AlwaysOff" in the Boot.ini of Windows. The exception list is no longer valid if "AlwaysOn" is selected. This setting prevents the start of WinCC flexible Runtime.

---

For additional information on DEP, refer to the Windows help and the Microsoft homepage.

## See also

- Installation overview (Page 8)
- Installing License Keys and options (Page 20)
- Error-handling (Page 21)
- Custom installation (Page 15)

## 1.1.2 Installation overview

### Introduction

This document describes the installation with the full version of WinCC flexible 2008.

### Requirements

- The requirements defined in the "System requirements" chapter must be met.
- Remove any previously installed versions of WinCC flexible including option packages prior to starting a new installation. To locate all option packages, search all entries starting with "SIMATIC WinCC flexible" under " Start > Settings > Control Panel > Software."

---

#### Note

For WinCC flexible 2004 remove the software manually using the Control Panel.

As of WinCC flexible 2005 the product DVD will support you. If you remove previous versions of WinCC flexible using the Setup.exe function on the DVD, the installation directory will be retained. Backup files are generated as required in the installation directory.

---

### User rights required

You require administrator rights in order to install WinCC flexible and WinCC flexible Runtime.

You require simple user rights to operate WinCC flexible and WinCC flexible Runtime under Windows XP.

### Select the WinCC flexible edition

During installation you do not differentiate between WinCC flexible Compact, Standard or Advanced. Which edition of WinCC flexible you are operating depends on the license and, with that, the installed license key.

You can migrate to a higher edition by installing the corresponding new license key. WinCC flexible always starts with the license key of the highest edition if several license keys are available. If necessary, uninstall the license key for the older edition.

If you wish to change to an earlier edition, install the license keys for the earlier edition. If necessary, uninstall the license key for the higher edition.



**Note****Requesting license keys from a license server**

You cannot select the licensing scope of License Keys you requested from the license server. You will be assigned the largest free license on the license server. You must therefore ensure that the license server provide floating licenses of an appropriate size. WinCC flexible starts without valid License Key if the requesting PC does not find a license.

Make sure that the Automation License Manager V4.0 is installed on the license server.

---

**Licenses**

WinCC flexible Engineering System requires a valid license. Each license is represented by a license key. The license key is installed on the respective system. You can install the license keys either immediately or later on.

Install any WinCC flexible options you have purchased separately. You must install the associated license keys for each option.

For detailed information on licenses and license keys, refer to the "Licenses" chapter.

Use Automation License Manager to install the license keys.

**Installation overview**

Select in which scope you wish to install the components:

- Full installation
- Minimum installation
- Custom installation

You define which components are to be installed by running a custom setup.

---

**Note****Separate installation of the Automation License Manager and WinCC flexible 2008**

Restart the PC once installation of the Automation License Manager is complete. Make sure that WinCC flexible 2008 can be installed without errors.

---

**User interface language of WinCC flexible ES**

You can select the dialog language of the configuration interface in any setup.

You can select the following languages:

- European:
  - German
  - English
  - French

- Italian
- Spanish
- Asian:
  - Chinese
  - Taiwanese
  - Japanese
  - Korean

---

**Note**

**WinCC flexible 2008 China**

Chinese simplified is available in WinCC flexible 2008 China.

---

### Security updates

WinCC flexible Setup installs any missing operating system components which are required. After having installed WinCC flexible, run "Microsoft Windows Update" to check for new security patches.

### See also

System requirements (Page 5)

Installing License Keys and options (Page 20)

License Keys and Authorizations (Page 30)

Working with License Keys and Authorizations (Page 37)

## 1.1.3 Components

### Components

WinCC flexible is a modular software package which contains the following components:

- WinCC flexible Engineering System
- WinCC flexible Integration:

Integrating WinCC flexible in STEP 7:

Configure and manage the SIMATIC visualization and automation components on a shared platform. SIMATIC Manager of STEP 7 provides such a platform where certain configuration tasks are automated.

---

**Note**

Integration in STEP 7 is only offered if STEP 7 has already been installed.

---

Integrating WinCC flexible in SIMOTION:

Configure and manage the SIMATIC visualization and SIMOTION automation components using the central SIMOTION SCOUT platform. Certain configuration tasks will be automated.

---

#### Note

Integration into SIMOTION is only offered if you have already installed SIMOTION.

---

- Migration:  
The data of an existing ProTool project or components of a WinCC project are converted to WinCC flexible.

### Installation routines

Select one of the following setup routines when installing WinCC flexible:

- Minimum installation
- Full installation
- Custom installation

The table below lists the particular components and their corresponding installation routine:

	Minimum installation	Full installation	Custom installation
WinCC flexible	Yes	Yes	Yes
WinCC flexible Integration in STEP 7	Yes	Yes	Configurable
WinCC flexible Integration in SIMOTION SCOUT	Yes	Yes	Configurable
Migration	No	Yes	Configurable
Libraries			
• Graphics	No	Yes	Configurable
• System libraries	No	Yes	Configurable
Help system	Yes	Yes	Configurable
ProAgent	No	No	Configurable

For additional information pertaining to custom installations, refer to the chapter " Custom installation ".

### ProAgent

ProAgent is not installed or updated automatically when you run the WinCC flexible setup. Remove any older version of ProAgent before you start installation.

Install ProAgent by taking the following actions:

- Start the setup of WinCC flexible.
- Select "Custom installation."
- Select "ProAgent".

## Additional software components

You can add the following software components to your WinCC flexible Engineering System installation:

- Support of "Save as version" (not available with Windows Vista OS)  
The "Project" > "Save as version" menu command is used to save projects in the format of previous WinCC flexible versions.
- Runtime/Simulation  
Runtime components for executing the project on the HMI device / Simulation components for simulating the project on the configuration computer.
- Automation License Manager  
Automation License Manager is used to handle the license keys.
- OPC-XML gateway  
The OPC gateway handles communication between DCOM and XML.
- Help files:  
Microsoft HTML help files for calling the Online Help system.

## User interface and project languages

The user interface language is the language in which the menus and dialogs of the Engineering System are displayed. Set up the English user interface for English configuration engineers. The English engineer can then configure a project for the French language, for example. The project and its configured objects are displayed in French language in runtime.

Optional GUI languages:

- Default: Setup language
- The user interface languages listed below are available for selection when installing WinCC flexible CSA: German, English, French, Italian, Spanish, Japanese, Korean, Chinese, Taiwanese
- WinCC flexible CHINA provides Chinese simplified as the user interface language.

## See also

Custom installation (Page 15)

### 1.1.4 Execute a minimum installation or full installation

#### Requirement

- The conditions described in the "System requirements" chapter must be fulfilled.
- All applications are closed.
- Remove any previously installed versions of WinCC flexible including option packages prior to starting a new installation.

---

**Note**

We recommend that you do not operate any applications using up resources during installation of WinCC flexible, such as virus scanners.

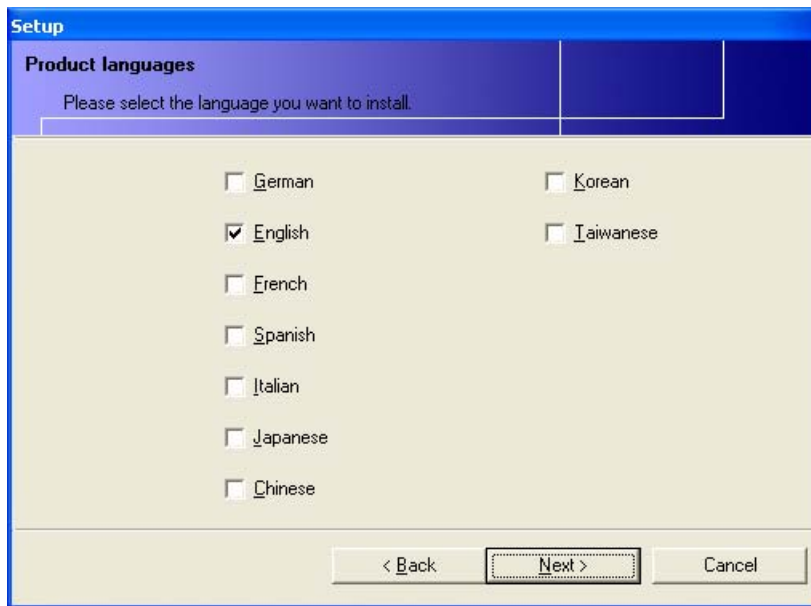
---

**Procedure**

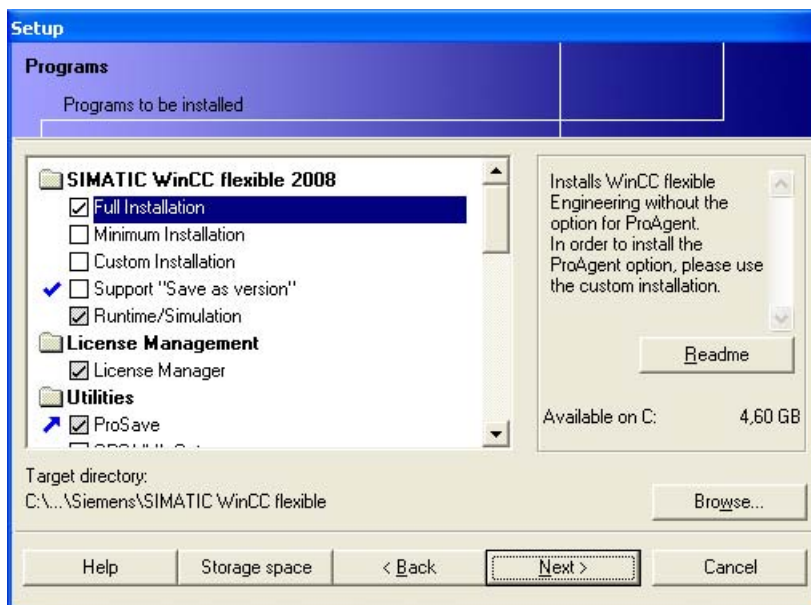
1. Insert the product DVD.  
Setup starts automatically. If Setup does not start automatically, double-click the "setup.exe" file in the directory CD\_1 on the product DVD.
2. Select the setup language.  
The dialog boxes are displayed in the setup language.
3. Open the product information in the next dialog box and read it carefully.
4. Read and accept the license agreement.



5. Select the user interface languages to be installed.  
You can toggle the configuration interface between the selected languages.



6. Select "Full installation" to run the corresponding setup.

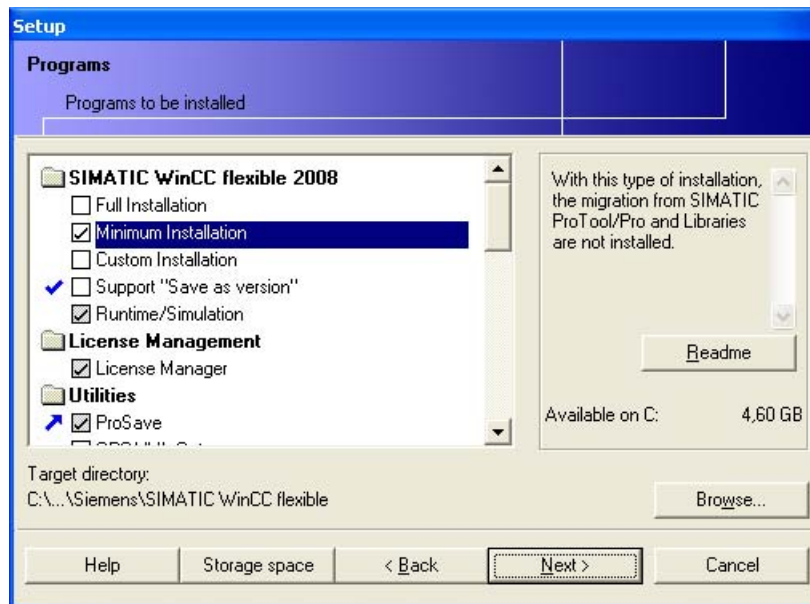


The status of each component is indicated by a small icon on its left side. You can view additional information about these icons by clicking the "Help" button.

**Note**

Automation License Manager must be installed in order to be able to operate WinCC flexible.

7. Select "Minimum installation" to run the corresponding setup.



8. Select additional components, if necessary.
9. Start the installation with "Next."

The WinCC flexible installation starts.

---

#### Note

Each setup phase takes several minutes. Installation of the component S7DOS may take several minutes in rare cases. Do not interrupt setup in these cases.

The progress bar is not displayed in certain setup phases, for example, during registration.

---

10. After setup was successfully completed, you are requested to transfer the license keys for the installed components if corresponding license keys were not found on the PC. Follow the instructions of the licensing dialogs and transfer the license keys from the storage location to the hard disk drive of your PC. You can also run Automation License Manager later to transfer the license keys.
11. Run WinCC flexible as described in the chapter "Startup" after having successfully completed the installation.

## 1.1.5 Custom installation

### Introduction

For the "Custom installation" you yourself establish which components are to be installed.

### Requirement

- The conditions described in the "System requirements" chapter must be fulfilled.

- All applications are closed.
- Remove any previously installed versions of WinCC flexible including option packages prior to starting a new installation.

---

**Note**

We recommend that you do not operate any applications using up resources during installation of WinCC flexible, such as virus scanners.

---

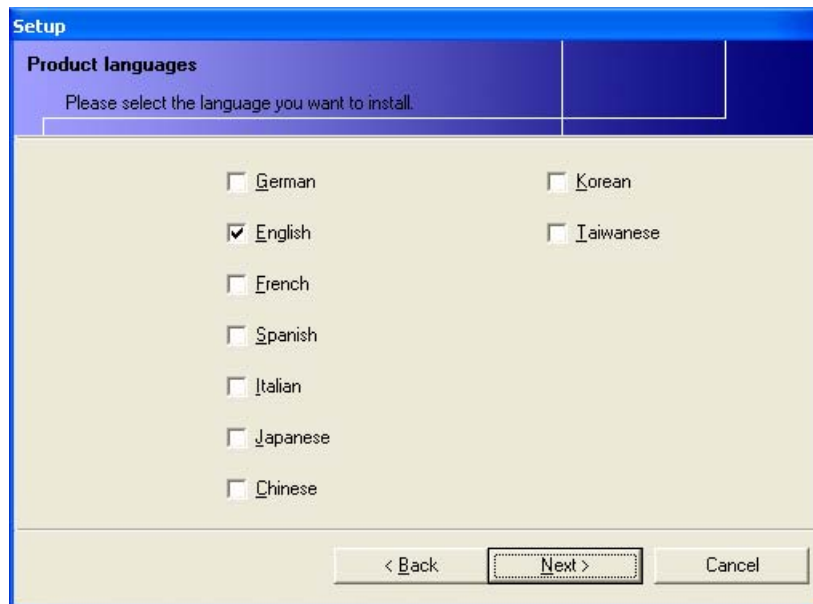
**Prepare for the installation procedure**

1. Insert the product DVD.  
Setup starts automatically. If Setup does not start automatically, double-click the "setup.exe" file in the directory CD\_1 on the product DVD.
2. Select the setup language.  
The dialog boxes are displayed in the setup language.
3. Open the product information in the next dialog box and read it carefully.
4. Read and accept the license agreement.

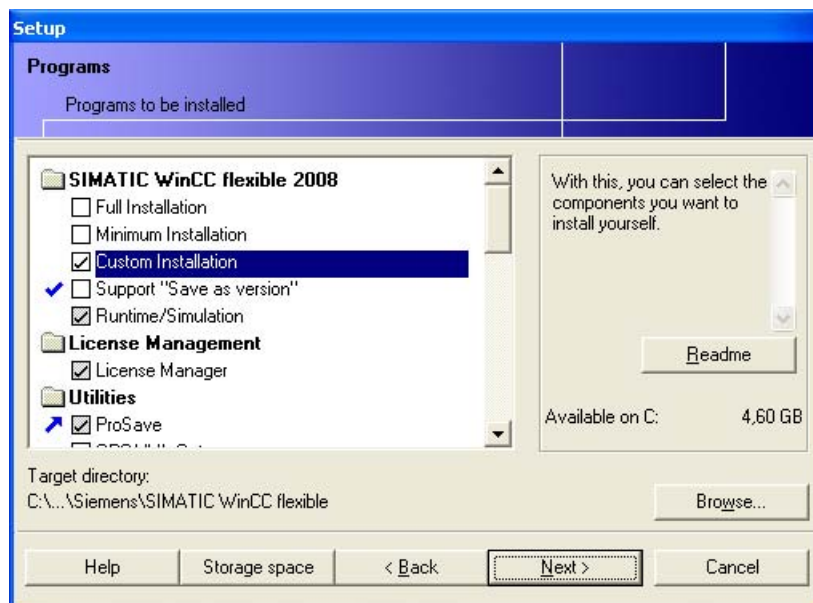


5. Select the user interface languages to be installed.  
You can toggle the configuration interface between the selected languages.





6. Select "Custom installation."



The status of each component is indicated by a small icon on its left side. You can view additional information about these icons by clicking the "Help" button.

---

**Note**

Automation License Manager must be installed in order to be able to operate WinCC flexible.

---

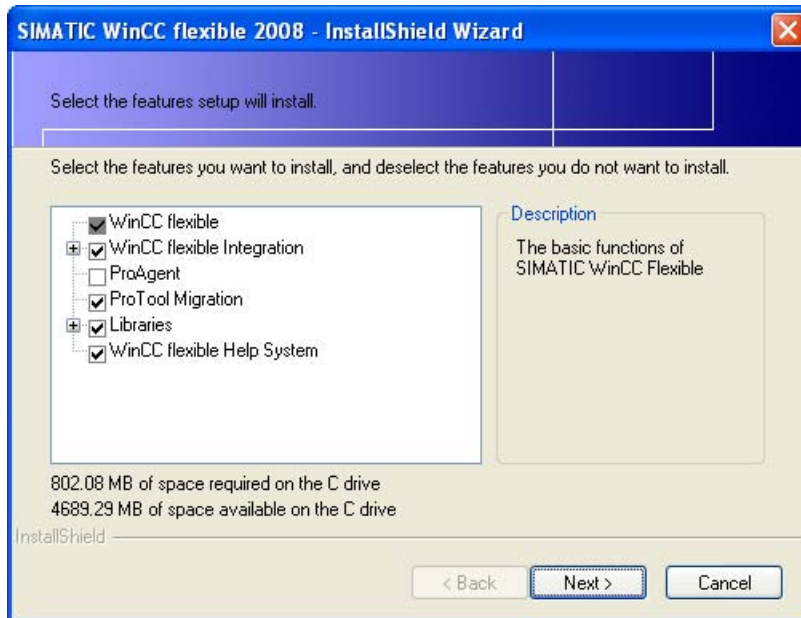
7. Select additional components, if necessary.
8. Select the required components.

Individual components require a license.

**Note**

The display of the dialog may take some time.

---



9. Start the installation with "Next."

The WinCC flexible installation starts.

**Note**

Each setup phase takes several minutes. Installation of the component S7DOS may take several minutes in rare cases. Do not interrupt setup in these cases.

The progress bar is not displayed in certain setup phases, for example, during registration.

---

10. After setup was successfully completed, you are requested to transfer the license keys for the installed components if corresponding license keys were not found on the PC. Follow the instructions of the licensing dialogs and transfer the license keys from the storage location to the hard disk drive of your PC. You can also run Automation License Manager at a later time to transfer the license keys.

11. After having successfully completed installation, run WinCC flexible as described in the "Startup (Page 49)" chapter.

## 1.1.6 Antivirus tools

### Approved antivirus tools

The following antivirus tools have been tested for compatibility with WinCC flexible 2008:

- McAfee Internet Security Suite 2008
- Trend Micro OfficeScan 8.0
- Symantec Norton Internet Security

These antivirus tool can usually be operated with default settings.

### Integrated firewall of the antivirus tools

Authorize access to the following locations in the firewall in order to work without problems in WinCC flexible:

- [installation folder WinCC flexible] \TraceServer.exe
- [installation folder WinCC flexible] \HMIES.exe
- [Installation directory of the Automation License Manager] almapp\almappx.exe
- %CommonProgramFiles%\Siemens\SWS\almsrv\almsrvx.exe

The use of a personal firewall can impair the functionality of WinCC flexible. We recommend allowing access for WinCC flexible.

---

#### Note

Note that most antivirus software programs check all local drives of your computer after setup. This check may take some time, depending on the volume of the file system to be scanned. It is not advisable to run the WinCC flexible setup until this check has been completed.

You should also observe the information of the supplier of your antivirus software.

---

### High CPU utilization rate during communication through OPC-XML / HTTP

Communication is carried out through Port Address 80 that is checked by the firewall or antivirus software respectively. This may result in a high utilization rate for the CPU.

### Runtime settings for McAfee SecurityCenter

The following settings have been tested and released for WinCC flexible.

Select "Custom installation" when carried out a new installation. Only install "VirusScan". Carry out the following configurations for "VirusScan":

- Activate the virus protection
- Deactivate the spyware protection
- Deactivate the SystemGuard protection
- Deactivate the Scriptscan protection.

If you have already installed McAfee SecurityCenter, remove all the components with the exception of VirusScan.

### 1.1.7 Installing License Keys and options

#### Introduction

With the purchase of a software package, you obtain a specific user license with an associated license key.

---

#### Note

The license key is installed on the respective system. The license key enables a particular part of the software to be used.

---

The usual procedure is to include the following License Keys when you install the software:

- For WinCC flexible Engineering System
- For WinCC flexible Runtime
- For options of WinCC flexible Engineering System
- For options of WinCC flexible Runtime

You can also install the License Keys separately at a later time.

Refer to the chapter "Licensing of HMI devices" for more information regarding licensing HMI devices.

---

#### Note

##### Installing WinCC flexible options

To install ProAgent, you must select the "Custom installation" and highlight ProAgent. All other options are either part of WinCC flexible, or are transferred alongside with ProSave. The options are activated for use. Install an option separately by installing the corresponding license key.

---

#### Requirements

- The storage location of the License Key is not write-protected and is ready.
- The drive on which you are installing a license key is local and not compressed.

<b>NOTICE</b>
License Keys are not installed on RAM drives, on floppy disks, or on compressed drives. Read the description of Automation License Manager ("Start ► SIMATIC ► Documentation".) Observe all warnings and notices. Any installed trial licenses are time-limited.

## Procedure

1. Close the WinCC flexible Engineering System and WinCC flexible Runtime.
2. To run Automation License Manager, select "Start ► SIMATIC ► License Management ► Automation License Manager" in Windows.
3. Select the storage location for the License Keys as source drive from the left pane.  
The License Keys or Authorizations available at the storage location are displayed on the right pane.
4. Select one or several License Keys to install for the software type, options or Powerpack, and then select "Transfer..." from the shortcut menu.

This opens the "Transfer License Key" dialog box.

5. Select the destination drive from the list, and then confirm your selection with "OK." The selected License Keys are deleted from the storage location.

Upon authorization, in each case the counter at the storage location will be decremented by 1. A placeholder remains at the storage location where the authorization can be recorded again. The License Keys or Authorizations are installed on the destination drive and are activated after the restart of WinCC flexible.

You can also drag-and-drop selected License Keys to the destination drive in the left pane.

## Authorizations

The previously used Authorizations were replaced by License Keys as of WinCC flexible 2005. Install the License Keys of WinCC flexible using Automation License Manager which is included by default in the setup of WinCC flexible.

---

### Note

Do not use the AuthorsW tool anymore.

---

## See also

Working with License Keys and Authorizations (Page 37)

Non-licensed mode (Page 52)


System requirements (Page 5)


## 1.1.8 Error-handling

### Possible errors during Setup and appropriate remedies

## Installation

### 1.1 Installing WinCC flexible

Error	Cause	Remedy	Procedure
The setup program does not start when you insert the product DVD into the DVD drive.	Autostart is disabled.	Run setup manually.	Select the DVD drive containing the product DVD, then double-click the "setup.exe" file in the CD_1 directory.
Setup will be cancelled with an error message.	Wrong Internet Explorer	Make sure that Microsoft Internet Explorer Version 6.0 service pack 1 or higher is installed.	Go online to <a href="http://www.microsoft.com">www.microsoft.com</a> to install the latest version of Microsoft Internet Explorer.
Setup is cancelled with error message 1645 "Error Installing Microsoft®.NET Framework, Return Code 1601."	Wrong DCOM configuration.	Check the DCOM configuration.	<ol style="list-style-type: none"> <li>1. Go to the Start menu of the operating system and select the command "Execute."</li> <li>2. Enter "dcomcnfg.exe" and close the dialog with the "OK" button.</li> <li>3. In the "Standard properties" tab of the "DCOM configuration properties" dialog box, do NOT select "Default authentication level" = "None" and "Default identity change level" = "Anonymous" at the same time.</li> </ol>
Confirm the messages which are output at short time intervals.	Missing License Key.	<p>Engineering System: Install the License Key for the relevant engineering tool on your engineering station.</p> <p>Runtime: On the HMI device, install the License Keys for Runtime and the configured options.</p>	<p>Install the licenses for WinCC flexible or for WinCC flexible Runtime with the Automation License Manager.</p> <p>Install License Keys on HMI devices with the Automation License Manager.</p> <p>Install authorizations separately with the ProSave service tool.</p>
The SQL server of WinCC V6 or higher cannot be installed.	WinCC flexible Start Center is activated.	The SQL server of WinCC V6 or higher can only be installed if the WinCC flexible start center is deactivated.	To do so, right-click the  icon in the Taskbar Notification Area, the Tray area of the task bar. Click "SIMATIC WinCC flexible Auto Start > Disable."
The SQL server of WinCC V6.2 or higher cannot be installed.	For example due to influences from other SQL instances.	You can install the SQL server of WinCC V6.2 only when you have removed the WinCC flexible instance of the Microsoft SQL Server 2005 Express Edition.	<ol style="list-style-type: none"> <li>1. Remove the WinCC flexible instance of the Microsoft SQL server. Remove WinCC flexible and components.</li> <li>2. Install WinCC V6.2.</li> <li>3. Run "setup.exe" from the WinCC flexible product DVD. Carry out the installation. Accept the conditions in the license agreement. Do not change the default setting in the other dialogs.</li> <li>4. Restart the PC once installation is complete.</li> </ol>

Error	Cause	Remedy	Procedure
The SQL server must carry out a reinstallation.	For example due to influences from other SQL instances.	Run the reinstallation.	<ol style="list-style-type: none"> <li>1. Insert the product DVD.</li> <li>2. Run "setup.exe" from the CD_1 directory.</li> <li>3. Carry out the installation. Accept the conditions in the license agreement. Do not change the default setting in the other dialogs.</li> <li>4. Restart the PC once installation is complete.</li> </ol>
A project is created or opened with an error message.	The user data of the Microsoft SQL Server 2005 Express Edition are damaged.	Delete the folder with the user data.	<ol style="list-style-type: none"> <li>1. Exit WinCC flexible 2008.</li> <li>2. To do so, right-click the  icon in the Taskbar Notification Area, the so-called Tray area of the task bar. Click "SIMATIC WinCC flexible Auto Start &gt; Exit."</li> <li>3. Delete the following directory in Windows Explorer: "%USERPROFILE%\Local Settings\Application Data\Microsoft\Microsoft SQL Server Data\WINCCFLEXEXPRESS" Under Vista, delete the following directory: "%USERPROFILE%\AppData\Local\Microsoft\Microsoft SQL Server Data\WinCCFLEXEXPRESS"</li> </ol>
A project is created or opened with an error message.	The Microsoft SQL Server 2005 Express Edition is installed on a Windows XP SP2 based computer. The user is attempting remote access. Connection establishment fails.	Install a Microsoft hotfix for your operating system.	A corresponding hotfix is available from Microsoft for this error: KB896613 <a href="http://support.microsoft.com/kb/896613/en-us">http://support.microsoft.com/kb/896613/en-us</a>

**Note**

Remove WinCC flexible if installation failed, such as due to power failure. Start reinstallation after removal.

If reinstallation fails, use the CleanupSupportTool and remove the installation residues.

For more information on WinCC flexible go to <<http://support.automation.siemens.com>>.

**See also**

System requirements (Page 5)

## 1.2 Modifying the WinCC flexible installation

### Introduction

WinCC flexible is a modular software which consists of several components such as Migration or GUI languages. These components can be installed or removed at a later time.

You can install additional software components such as Runtime/Simulation.

### Requirement

- The conditions described in the "System requirements" chapter must be fulfilled.
- WinCC flexible has been installed.

---

**Note**

Make sure that Microsoft Internet Explorer Version 6.0 service pack 1 or higher is installed. Otherwise, Setup of WinCC flexible will be cancelled with an error message.

Microsoft Internet Explorer Version 6.0 or SP 1 is available on the Microsoft homepage at "<http://www.microsoft.com>."

Use Microsoft Windows Update to update your operating system. For information, refer to the Microsoft Windows Help or to the Microsoft homepage.

---

**Note**

**Post-installation requirements**

If the basic installation is carried out via a network drive, then the original network drive must be available for a reinstallation. In this situation, it is not possible to install further components from the product DVD.

---

---

**Note**

We recommend that you do not operate any applications using up resources during installation of WinCC flexible, such as virus scanners.

---

### Procedure

1. Close all opened applications, particularly WinCC flexible Engineering System and WinCC flexible Runtime.
2. Insert the WinCC flexible product DVD into the DVD drive. It is also possible to run Setup from the network drive.



3. If the autostart of Setup fails, double-click "setup.exe" on the DVD.  
The WinCC flexible InstallShield Wizard opens.
4. Select the setup language.  
The dialog boxes are displayed in the setup language.
5. Open the product information in the next dialog box and read it carefully.
6. Read and accept the license agreement.
7. Select the product languages that you wish to install.

---

**Note**

Select all GUI languages which should be installed, including already installed GUI languages.

---

8. Select Installation routine.
9. Click "Next."  
Installation is now started. The WinCC flexible InstallShield Wizard is displayed.
10. Set the "Modify program" option.
11. Click "Next."
12. The next dialog box shows the WinCC flexible components.  
Check box set: Install components.  
Check box cleared: Uninstall components.
13. Click the components to modify.

---

**Note**

If you enable a component, a description is displayed. This documentation is only available if the corresponding component is installed.

---

14. Click "Next."
15. In the following dialog end the installation with "Finish."  
Restart WinCC flexible to apply your changes.

## 1.3 Options and Powerpack

### 1.3.1 Available options

#### Introduction

Options are available for the following components:

- WinCC flexible Engineering System

- WinCC flexible Runtime on PC-based HMI devices
- Non-PC-based HMI devices

You can operate device-dependent runtime options on the HMI devices.

Each option requires a license.

### Options for WinCC flexible Engineering System

Options available for the WinCC flexible Engineering System:

SIMATIC WinCC flexible options	Function	Availability
WinCC flexible /ChangeControl	Version management and modification tracking	WinCC flexible Compact/ Standard/ Advanced

### Options for WinCC flexible Runtime

The options depend on the target system used. The following options are available for WinCC flexible Runtime on PC-based HMI devices or for non-PC-based HMI devices:

SIMATIC WinCC flexible RT options	Function	Non-PC-based HMI devices	SIMATIC panel PCs
WinCC flexible /Archives	Archiving functionality in runtime	From Panel 270	x
WinCC flexible /Recipes	Recipe functionality in runtime	Device-dependent available; no licensing necessary.	x
WinCC flexible /Sm@rtAccess	Remote control and remote monitoring as well as communication between different SIMATIC HMI systems.	From Panel 270	x
WinCC flexible /Sm@rtService	Remote maintenance and servicing of machines/plants via the Internet/Intranet.	From Panel 270	x
WinCC flexible /OPC-Server	Use of an HMI device as OPC server	Multi panel	x
WinCC flexible /ProAgent	Process diagnostics during runtime	From Panel 270	x
WinCC flexible /Audit	Reporting interactions according to FDA	From Panel 270	x

**Note**

The mutual use of the options Sm@rtAccess and Sm@rtService with the option Audit is not enabled.

**Note****Installing the Audit Viewer**

Audit Viewer is a comfortable tool for evaluating the audit trail of the WinCC flexible / Audit option in preparation of an external analysis on an office PC.

To install Audit Viewer, start the setup.exe on the product DVD in the directory CD\_2/Support/Audit Viewer/Setup.

The Audit Viewer can only run on Windows XP.

---

## 1.3.2 Installing and uninstalling options

### Introduction

Options are already included in WinCC flexible and are installed as standard.

To install ProAgent, you must select the "Custom installation" and highlight ProAgent.

You must enable all the necessary options for use.

---

**Note**

Each option requires a license. Enable an option by installing the corresponding License Key.

---

### Options for non-PC-based HMI devices

The necessary Runtime options are installed on the HMI device as follows:

- During the transfer of the project to the HMI device
  - Any options that are no longer required are uninstalled automatically.
- Alongside with ProSave

### Procedure - enabling options

Activate an option by installing the corresponding License Key as described in the "Installing licenses and options (Page 20)" section.

In order to backup the License Key of an option or use it on a different configuration PC or HMI device you must remove this License Key.

**NOTICE**

If no valid license key is installed on an HMI device or on a PC with WinCC flexible Runtime, runtime will run in a non-licensed mode.

---

**Note**

You can always purchase the license of an option and then install the license key at a later date.

---

**See also**

Uninstalling License Keys and options (Page 46)

Available options (Page 25)

Non-licensed mode (Page 52)

### 1.3.3 Powerpack

#### Introduction

The following upgrades are possible with a powerpack:

- From a smaller to a larger edition of WinCC flexible Engineering System
- On a runtime system with greater quantity structure

A powerpack also includes a special license using which you can at any time enable a higher level of WinCC flexible for use.

#### Engineering System

You have, for example, WinCC flexible Compact. Use the "SIMATIC WinCC flexible Standard, Powerpack for WinCC flexible Compact" powerpack to activate WinCC flexible Standard.

#### Runtime

You have, for example, WinCC flexible Runtime with 128 tags. Use the "SIMATIC WinCC flexible Runtime, Powerpack 128 to 512 PowerTags" powerpack to enable WinCC flexible Runtime with 512 tags for use.

---

**Note**

You can always purchase the license for a powerpack and then install the license key at a later date. In doing so, the existing license key is deleted and replaced by a new license key.

---

**See also**

Scope of delivery (Page 75)

Installing a Powerpack (Page 29)

Installation overview (Page 8)

## 1.3.4 Installing a Powerpack

### Introduction

Install a powerpack by installing the corresponding license key. The powerpack license key replaces the license key of an existing installation.

---

**Note**

You install the license key for a powerpack once. You cannot uninstall the license key for a powerpack.

---

### Requirements

- The conditions described in the "System requirements" chapter must be fulfilled.
- WinCC flexible has been installed.
- The license key for the license for which you have purchased a powerpack is installed.

---

**Note**

Make sure that Microsoft Internet Explorer Version 6.0 service pack 1 or higher is installed. Otherwise, Setup of WinCC flexible will be cancelled with an error message.

Microsoft Internet Explorer Version 6.0 or SP 1 is available on the Microsoft homepage at "<http://www.microsoft.com>."

Use Microsoft Windows Update to update your operating system. For information, refer to the Microsoft Windows Help or to the Microsoft homepage.

If the basic installation is carried out via a network drive, then the original network drive must be available for a reinstallation. It is not possible to install further components from the product CD if you installed your basic software from a network drive.

---

### Installing a powerpack

1. Install the powerpack license key you purchased as described in the chapter "Installing license keys and options."

### Result

The powerpack license key replaces the former license key. You cannot reverse this process.

### See also

Installing License Keys and options (Page 20)

Powerpack (Page 28)

## 1.4 Licenses

### 1.4.1 License Keys and Authorizations

#### Introduction

With the purchase of a software package, you obtain a specific user license with an associated license key.

The license key is installed on the following devices:

- On the hard disk of a WinCC flexible configuration PC
- On the hard disk of a PC-based HMI device

A PC with WinCC flexible Runtime

- On a non-PC-based HMI Devices

The license key enables a particular part of the software to be used.

Authorizations were used instead of the new License keys in versions up to WinCC flexible 2004.

You can continue to use existing authorizations for WinCC flexible Runtime options and powerpacks in many cases. Compared to authorizations, the License Keys are more convenient and offer many new functions.

---

#### Note

You can also transfer License keys to different PCs on the network. For detailed information, refer to Automation License Manager Online Help.

---

#### Note

If you want to retrofit an existing system, you can purchase an upgrade. The upgrade replaces existing authorizations or License Keys with the new License Key.

---

<b>CAUTION</b>
----------------

If an authorization is being upgraded to a license key, the authorization is destroyed and a license key is created. This effect is irreversible. The generated license key can no longer be used as a license for previous versions of WinCC flexible.
---

#### See also

Scope of delivery (Page 75)

Installing License Keys and options (Page 20)

Working with License Keys and Authorizations (Page 37)

Automation License Manager (Page 40)

Licensing of HMI devices (Page 36)

Licensing WinCC flexible Runtime on PC-based HMI devices (Page 35)

## **1.4.2 License types**

The type of use for the software results from the certificate of license.

WinCC flexible Engineering System requires the following types of license:

- Floating license
- Trial license

WinCC flexible Runtime and options for runtime use the following types of license:

- Single license

### **Floating license**

The floating license is the standard license for the WinCC flexible Engineering System.

The floating license is an unrestricted license (in terms of time), that you can install and use locally or on any computer.

The floating license can also be purchased from a license server via the network. In doing so, a license key is assigned by the license server when starting WinCC flexible. When ending WinCC flexible the license key is then enabled once again.

The license size cannot be selected when obtained via the license server. The first free license of the license server is allocated. You must therefore ensure that sufficient floating licenses are available on the license server. If the requesting computer does not have a sufficiently large license, WinCC flexible ES can only be operated at a lower edition.

If the floating license is purchased via the network, you must also note the following points:

- The Automation License Manager V4.0 must be installed on the license server.
- After a connection interruption, after three hours the non-licensed mode will be launched.

The floating license can be upgradeable.

### **Single license**

All licenses for WinCC flexible Runtime and runtime options are single licenses.

The single license is an unrestricted standard license (in terms of time), that you can install and use locally or on any computer.

The single license can be upgradeable.

### **Trial license**

The trial license is a unique, restricted standard license (in terms of time), that you can install and use locally or on any computer. The trial license expires after 14 days.

### Upgrade license

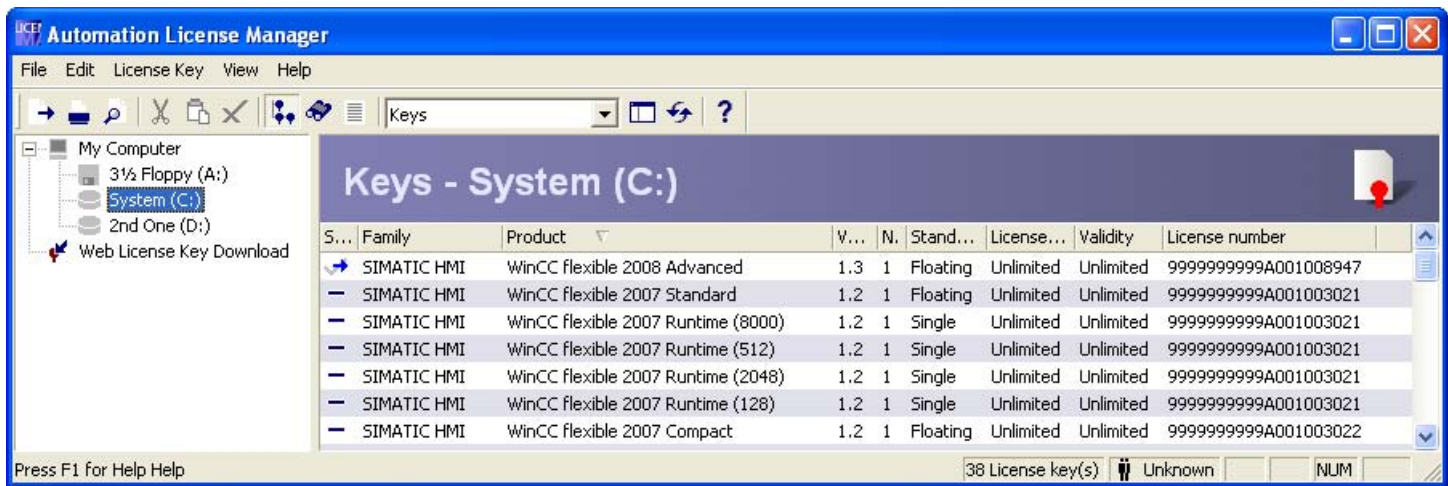
You can execute, for example, the following with the upgrade license:

- Change from an old to a new version  
Prerequisite is that the new version has been installed.
- Expand the quantity structure

### Automation License Manager

Further information about handling the licenses can be found in the Automation License Manager help.

The Automation License Manager shows the license type in the "Basic license types" field.



### 1.4.3 Licensing of WinCC flexible Engineering Systems

You require a license key for the following:

- WinCC flexible Engineering System, e.g. WinCC flexible Standard
- Options for WinCC flexible Engineering System

You can include the License Key during the setup of WinCC flexible.

The Automation License Manager administers the license keys.

### Authorizations

---

#### Note

Up until WinCC flexible 2004, authorizations were required for licensing. Do not use the AuthorsW. tool in versions as of WinCC flexible 2005.

---



**CAUTION**

If an authorization is being upgraded to a license key, the authorization is destroyed and a license key is created. This effect is irreversible. The generated license key can no longer be used as a license for previous versions of WinCC flexible.

### Starting without a valid license key

If you start WinCC flexible without a valid license, the system alerts you that you are working in non-licensed mode. You have the one-time option of activating a trial license. The trial license expires after 14 days.

If the trial license expires, the following scenarios can occur:

- WinCC flexible was never licensed on the PC in question.
  - WinCC flexible cannot be started.
- WinCC flexible was already licensed on the PC in question.
  - WinCC flexible cannot be started. Non-licensed mode is indicated every 10 minutes by a window, which you must acknowledge.

### To correct or avoid error

Install the license key for the respective license.

### License type

A floating license is used for the WinCC flexible Engineering System.

## 1.4.4 Requesting License Keys from a license server

---

### Note

You cannot select the licensing scope of License Keys you requested from the the license server. You will be assigned the largest free license on the license server. You must therefore ensure that the license server provide floating licenses of an appropriate size. WinCC flexible starts without valid License Key if the requesting PC does not find a license.

Make sure that the Automation License Manager V4.0 is installed on the license server.

---

The system usually runs SIMATIC WinCC flexible Autostart after you startup the PC. SIMATIC WinCC flexible Autostart performs the following actions after the PC startup:

- Immediate search for a free License Key
- Assignment of a License Key

However, the License Key on the license server cannot be used.

## Possible problems

The request of a License Key from a license server may induce the following behavior, for example:

The following situations may arise if one License Key is installed per Compact, Standard and Advanced edition on the license server:

- The License Key is currently in use.

The License Key for WinCC flexible Advanced is available at the startup of the Engineering PC. SIMATIC WinCC flexible Start Center sets the Advanced edition. WinCC flexible is started on the engineering PC at a later time. The License Key for the Advanced edition is being used in the meantime by a different engineering PC and is therefore no longer available.

Result:

WinCC flexible Advanced edition starts without valid license.

- A free License Key is not assigned

The License Key for WinCC flexible Advanced is currently in use, and the License Key for WinCC flexible Standard available at the startup of the engineering PC. The Standard edition cannot be used to configure PC Runtime, for example.


SIMATIC WinCC flexible Start Center sets the Standard edition. WinCC flexible is started on the engineering PC at a later time. However, although the License Key for the Advanced edition has been released in the meantime, it has not been assigned.

Result:


The License Key for the Advanced edition is not going to be used although it is free.

## Remedy

Take the following steps if the License Key for the required edition is not assigned:

1. Exit the WinCC flexible Engineering System.
2. Right-click the icon  in the task bar notification area.
3. Click on "SIMATIC WinCC flexible Auto Start > Disable".

A red dot in the icon indicates the deactivated state.

4. Right-click the icon  in the task bar notification area.
5. Click on "SIMATIC WinCC flexible Auto Start > Enable".

The red dot in the icon is cleared in activated state.

SIMATIC WinCC flexible Start Center searches for free License Keys on the license server and assigns the highest free license.

6. Start the WinCC flexible Engineering System.

WinCC flexible starts with the license assigned to the corresponding edition.

### 1.4.5 Licensing WinCC flexible Runtime on PC-based HMI devices

For PC-based HMI devices you require a license key for the following:

- WinCC flexible Runtime, e.g. with 128 tags
- WinCC flexible options

You can include the License Key during the setup of WinCC flexible.

The Automation License Manager administers the license keys and authorizations on PC-based HMI devices.

---

#### Note

Only the Certificate of License for WinCC flexible 2008 Runtime authorizes the use of WinCC flexible 2008 Runtime.

---

The applicable new license is required to license WinCC flexible 2008 Runtime.

The Runtime licenses of WinCC flexible 2005 remain functional and can be used during the course of the upgrade to WinCC flexible 2008.

### Authorizations

---

#### Note

WinCC flexible 2004 or lower versions required authorizations for licensing. No longer use the tool AuthorsW.

---

The Runtime authorizations of WinCC flexible 2004 remain functional and can be used in the course of the upgrade to WinCC flexible 2008.

### Non-licensed mode

WinCC flexible Runtime and the runtime options can be used without restrictions without a valid license. Non-licensed mode is indicated every 10 minutes by a window, which you must acknowledge.

### Remedy

Install the license key for the respective license.

### License types

A single license is used for WinCC flexible Runtime and runtime options.

### See also

License Keys and Authorizations (Page 30)

### 1.4.6 Licensing of HMI devices

Non-PC-based HMI devices are always equipped with the maximum quantity structure. A license key is not required for runtime operation.

A license is required for each option for non-PC-based HMI devices. The license key or the authorization of the respective license enables in each case one option for use.

#### License key

To be able to license non-PC-based HMI devices with license keys you require the "SIMATIC HMI License Manager Panel Plugin" add-on.

WinCC flexible setup installs this add-on as standard.

If WinCC flexible is not installed, an installation of ProSave 7.2 or higher is required.

---

#### Note

Further information about handling the licenses can be found in the Automation License Manager help.

---

#### Note

License Keys are used a of version WinCC flexible 2005.

Verify that the current release of the operating system is installed on the HMI device before you start licensing. If necessary, update the operating system using ProSave.

---

#### Authorizations

Alternatively, you can use existing authorizations of WinCC flexible 2004 options.

- 270 series
- 370 series

You can only use authorizations if the operating system version of WinCC flexible 2004 is installed on the listed HMI devices. License Keys can be used on these HMI devices if operating system version WinCC flexible 2005 or higher is installed.

The ProSave service tool is used to install authorizations on non-PC-based HMI devices.

Use License Keys to license the options on all other HMI devices.

<b>NOTICE</b>
The original authorization disks are needed for transferring authorizations on non-PC-based HMI devices with ProSave.

---

#### Note

For the procedure and more information, consult the ProSave documentation.

---

## Data backup

### CAUTION

#### Destruction of License Keys on non-PC-based HMI Devices

The authorizations and License Keys you installed are destroyed by back-up / restore processes on the HMI devices listed below.

- 270 series
- 370 series

Carry out the following before beginning with restoring:

- Use the Automation License Manager and ProSave to check whether authorizations or License Keys are installed on the HMI device.
- Remove any License Keys and authorizations present on the HMI device.

After restoring has been carried out, re-install the License Keys and authorizations on the HMI device.

## Non-licensed mode

In particular, runtime options can also be used without a license. Non-licensed mode is indicated every 10 minutes by a window, which you must acknowledge.

## Remedy

Install the license key for the respective license.

## License types

A single license is used for runtime options.

## Licensing of ThinClient

The authorization for Thin-Client continues to be used. You cannot transfer the authorization using the Automation License Manager. Always use ProSave to transfer the authorization.

## See also

License Keys and Authorizations (Page 30)

## 1.4.7 Working with License Keys and Authorizations

### Introduction

You install a license key or authorization in the following cases:

- To use the WinCC flexible Engineering System

- To use options of the WinCC flexible Engineering System
- To use WinCC flexible Runtime
- To use options of WinCC flexible Runtime on PC-based HMI devices
- To use options on non-PC-based HMI Devices

You remove a License Key or an Authorization in the following situations:

- When backing up data
- If you no longer require the license

You can then use this license on another PC or HMI device.

When you install a license, the associated License Key is removed from the license key storage location.

If you still have authorizations, you can also store these at license key storage location. When you install an authorization, only the respective counter on the license key storage location is decremented. A placeholder remains at the storage location to which you can return the authorization.

<b>CAUTION</b>
----------------

The original authorization disks are needed for transferring authorizations on non-PC-based HMI devices with ProSave.
---

---

**Note**

License Keys or authorizations cannot be copied. The utilized copy protection process prevents copying of the license key and authorization disks.

---

## Data backup

Remove the License Keys and authorizations from the HMI device when backing up data on the HMI device and when creating a backup for replacing a device.

- For non-PC-based HMI devices, the authorization can be restored to the authorization storage area using ProSave.
- You use the Automation License Manager to save license keys for non-PC-based HMI devices at the storage area of the license key.
- You use the Automation License Manager to save license keys or authorizations for PC-based HMI devices at the storage area of the license key.

**CAUTION**

**Destruction of License Keys on non-PC-based HMI Devices**

The License Keys and authorizations you installed are destroyed by back-up / restore processes on the HMI devices listed below.

- 270 series
- 370 series

Start by removing all License Keys and authorizations from the HMI device, or exclude these from the backup before you generate a backup copy of the data. This ensures that you will not overwrite the licenses when you restore the backup copy.

Open ProSave and Automation License Manager tools in order to verify that no authorizations or License Keys are installed on the device before you restore your data.

**CAUTION**

**Destruction of License Keys on PCs**

Start by removing all License Keys in the following situations:

- Before you format the hard disk
- Before you compress the hard disk
- Before you restore the hard disk
- Starting an optimization program that moves fixed blocks
- Installing a new operating system

Read the description of Automation License Manager ("Start ► Simatic ► Documentation"). Observe all warnings and notices.

The License Key storage location on PC-based HMI devices and on non-PC-based HMI devices where Automation License Manager is used may contain multiple License Keys. Save all License Keys of the HMI device to the same storage location.

**CAUTION**

Always preserve the original storage location of the License Keys or the original authorization disk.

**Invalid license after time-zone change**

The installed license no longer functions in the following case.

- If you change the time zone on a WinCC flexible PC as follows:
  - From a time that refers to a complete hour to a time that does not refer to a complete hour.  
Example: You change the time zone from GMT +3:00 to GMT +3:30.

To avoid this inconvenience, remove the license key under the time zone setting that was set when the license key was installed.

Example:

You have installed the license key with a time zone setting that refers to a full hour. Then uninstall the license key also with a time zone setting that refers to a full hour.

This behavior does not apply to the trial license.

### Defective License

A license is faulty in the following cases:

- If the License Key is no longer accessible at the storage area.
- If the License Key disappears during its transfer to the destination drive.

The Automation License Manager can be used to repair the defective license. Use the "Restore" function or the "Restore wizard" of the Automation License Manager for this purpose. Contact A&D Customer Support to restore the license.

---

#### Note

The runtime software can also be operated without errors if the license is missing or defective. The system alerts you at short intervals that you are working in non-licensed mode.

---

<b>CAUTION</b>
----------------

If you start WinCC flexible Engineering System without a valid license key, the system alerts you that you are working in non-licensed mode. You have the one-time option of activating a trial license. The trial license expires after 14 days.
---

If the trial license expires, the following scenarios can occur:
--

- |  |
|--|
| <ul style="list-style-type: none"><li>• WinCC flexible was never licensed on the PC in question.<br/>WinCC flexible cannot be started.</li><li>• WinCC flexible was already licensed on the PC in question.<br/>WinCC flexible cannot be started. Non-licensed mode is indicated every 10 minutes by a window, which you must acknowledge.</li></ul> |
|--|

### See also

Installing License Keys and options (Page 20)

Uninstalling License Keys and options (Page 46)

License Keys and Authorizations (Page 30)

## 1.4.8 Automation License Manager

### Introduction

Use Automation License Manager to install and remove License Keys separately. The Automation License Manager is automatically included in the WinCC flexible set-up.



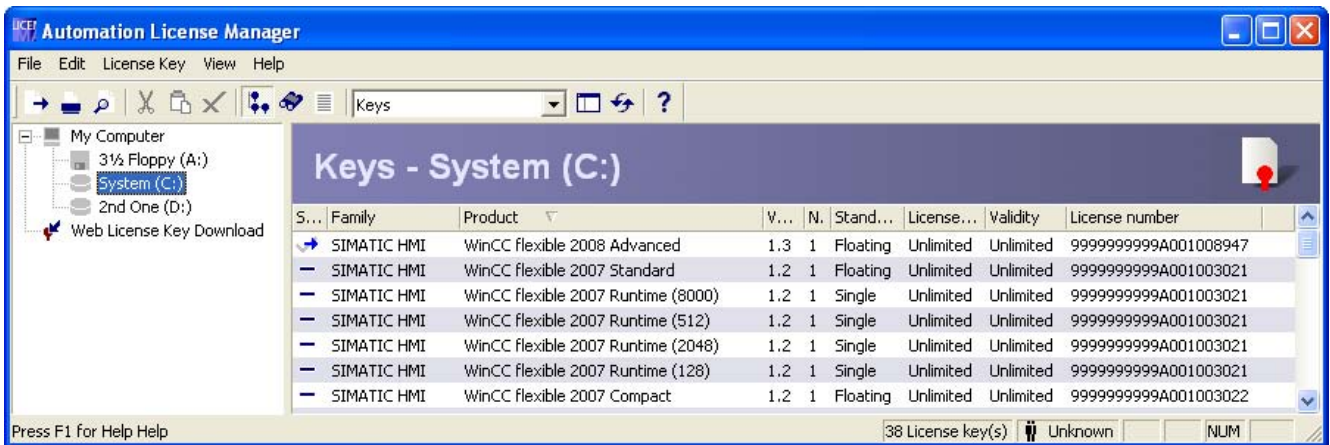
When you initially install a License Key on a PC-based system, Automation License Manager creates a folder named "AX NF ZZ" on a hard disk drive. This directory is assigned the "System" and "Hidden" attributes and is automatically deleted when you remove the last License Key.

**CAUTION**

Do not change the name or the attributes of this folder. Your installed License Keys will otherwise be lost irrevocably.

**Parameters**

In addition to the installed License Keys, Automation License Manager also shows their parameters.



The table below shows the parameters, and their meaning and use.

Parameters	Meaning	Application
Status	Indicates the status of a License Key. The most important states are: OK inactive corrupted	To check the status, select one or several License Keys; then select "Check" from the shortcut menu.
Family	Shows the product family associated with a License Key.	Helps you to assign a License Key when handling licenses for different product families.
Product	Software type, option or powerpack registered for use by the License Key.	Use this column as an orientation when, for example, transferring the License Key for an option.
Version	Specifies for which product version the License Key is valid	A License Key can only be used for the relevant valid product version.

Parameters	Meaning	Application
Basic license types	Shows the basic license type. The following types are supported by WinCC flexible: <ul style="list-style-type: none"> <li>• Floating</li> <li>• Trial</li> <li>• Single</li> </ul>	
License type	Shows more information about the license type. The following types are supported by WinCC flexible: <ul style="list-style-type: none"> <li>• Without restriction</li> <li>• Trial (limited days)</li> </ul>	
Validity	Service life of the License Key	You can recognize the service life of the trial license by the given information.
License number	The license number authorizes you to use the relevant product in accordance with the "Certificate of License." 10 characters = Authorization; 20 characters = License Key	When service is required, or a License Key has been lost, the license number provides proof of your purchase of the product and the associated authentication.
Number of License Keys	View of an available License Key on the selected drive. A separate entry will be generated for each License Key. This entry will be deleted when you transfer the License Key.	View of a License Key.
Number of Authorizations	Number of existing Authorizations on the selected drive 0 = The Authorization is no longer available on the selected drive. 1 = The Authorization is available on the selected drive.	The Authorizations with counter value "0" have already been transferred to a different drive.

**See also**

License Keys and Authorizations (Page 30)

Scope of delivery (Page 75)

## 1.5 Uninstalling WinCC flexible

### 1.5.1 Uninstalling WinCC flexible and components

#### Introduction

By uninstalling WinCC flexible, you also uninstall all components, but not the license keys.

#### Uninstall WinCC flexible

#### Requirement

- The conditions described in the "System requirements" chapter must be fulfilled.
- WinCC flexible has been installed.

#### Procedure

1. Close all opened applications, particularly WinCC flexible Engineering System and WinCC flexible Runtime.
2. Disable the WinCC flexible Start Center.  
You can find more notes on WinCC flexible Start Center in the "WinCC flexible Start Center" chapter.
3. Select "Start > Settings > Control Panel" to open the Control Panel.
4. Double-click "Software" on the Control Panel.  
This opens the "Software" dialog box.
5. From this dialog box, select "SIMATIC WinCC flexible 2008."  
The "Modify" and "Remove" buttons appear.
6. Click "Remove".  
The WinCC flexible InstallShield Wizard opens.
7. Activate the "Remove program" option and then click "Next".
8. Confirm the removal with "OK".  
WinCC flexible is removed from the configuration PC.
9. On the next dialog box, click "Finish" to close the uninstall dialog.

#### Result

WinCC flexible has been removed.

### Removing WinCC flexible 2008 Runtime

1. Close all open applications, in particular WinCC flexible Runtime.
2. Select "Start > Settings > Control Panel" to open the Control Panel.
3. Double-click "Software" on the Control Panel.  
This opens the "Software" dialog box.
4. Select "SIMATIC WinCC flexible 2008 Runtime" from this dialog box.  
The "Modify" and "Remove" buttons appear.
5. Click "Remove".  
The WinCC flexible InstallShield Wizard opens.
6. Activate the "Remove program" option and then click "Next".
7. Confirm the removal with "OK".  
WinCC flexible Runtime is removed from the Runtime PC.
8. On the next dialog box, click "Finish" to close the uninstall dialog.

### Integrated installation

If WinCC flexible is integrated in SIMATIC STEP 7 and/or SIMOTION SCOUT, always uninstall in the order outlined below. In the first step, uninstall WinCC flexible. Next, uninstall SIMATIC STEP 7 and /or SIMOTION SCOUT.

### ProTool

You should reinstall ProTool if the removal of WinCC flexible has a negative impact on ProTool functions, such as preventing you from opening screens.

### User dictionary

The uninstall routine also deletes the user dictionaries. If you still require the data you should create a backup copy of the user dictionaries prior to uninstalling.

1. Search for the "UserDictionary.ldf" file in the "C:\Documents and Settings\All Users\Application Data\Siemens AG" folder.

---

#### Note

The following storage location is used in Windows Vista:

"C:\ProgramData\Siemens AG\WinCC flexible"

---

2. Copy the "UserDictionary.dct" and "UserDictionary\_log.LDF" files.

### Microsoft SQL Server 2005 Express Edition

During removal of WinCC flexible, the WinCC flexible instance of the Microsoft SQL Server will not be removed automatically.

1. Select "Start > Settings > Control Panel" to open the Control Panel.
2. Double-click "Software" on the Control Panel.  
This opens the "Software" dialog box.
3. In the "Software" dialog box, select "Microsoft SQL Server 2005."  
The "Modify" and "Remove" buttons appear.
4. Click "Remove".  
The "Microsoft SQL Server 2005 Uninstall Dialog" will open.
5. Select the entry WINCCFLEXEXPRESS: Database Engine in the "Microsoft SQL Server 2005 Uninstall" dialog.
6. Click "Next."
7. Confirm the removal with "OK".  
The WinCC flexible instance of the Microsoft SQL Server will be removed from the configuration PC.
8. On the next dialog box, click "Finish" to close the uninstall dialog.

---

**Note**

You have removed the WinCC flexible instance of the Microsoft SQL Server. Select "Start > Settings > Control Panel" to remove the Microsoft SQL Server after having confirmed that it is not used by any other program.

---

For more information on Microsoft SQL Server 2005 Express Edition go to the FAQ section at <<http://support.automation.siemens.com>>. Enter the ID "29420407" in the search.

**Microsoft SQL Server Desktop Engine (MSDE)**

During removal of WinCC flexible, the WinCC flexible instance of the Microsoft SQL Server will not be removed automatically.

1. Select "Start > Settings > Control Panel" to open the Control Panel.
2. Double-click "Software" on the Control Panel.  
This opens the "Software" dialog box.
3. In the "Software" dialog box, select "Microsoft SQL Server Desktop Engine (WinCCflexible)."  
The "Remove" button appears.
4. Click "Remove".
5. Confirm the removal with "OK".

The WinCC flexible instance of the Microsoft SQL Server will be removed from the configuration PC.

**See also**

Uninstalling License Keys and options (Page 46)

## 1.5.2 Uninstalling License Keys and options

### Introduction

After uninstalling WinCC flexible you then uninstall the licenses separately using Automation License Manager. You must uninstall the license key for the following components:

- Engineering software
- Runtime software
- Options

Uninstall licenses from the HMI using ProSave or Automation License Manager.

You uninstall an option separately by uninstalling the corresponding license key.

### Requirement

- The storage location of the license key is not write-protected and is ready.
- The drive from which you uninstall the licenses is local and not compressed.
- WinCC flexible Auto Start has been completed.

<b>CAUTION</b>
Read the description of Automation License Manager ("Start ► Simatic ► Documentation"). Observe all warnings and notices.

### Procedure

1. Close WinCC flexible Engineering System and WinCC flexible Runtime.
2. To run Automation License Manager, select "Start ► Simatic ► License Management ► Automation License Manager" in Windows.

The Automation License Manager is included in the WinCC flexible set-up as standard.

3. From the left pane, select the drive which contains the license.

All License Keys or Authorizations available on this drive are shown on the right pane.

4. Select the License Keys or Authorizations to be removed and then select "Transfer..." from the shortcut menu.

This opens the "Transfer License Key" dialog box.

5. Select the storage location from the list, and then confirm your selection with "OK." The selected License Keys are transferred to the storage location. The counter of each authorization will increment by the count of one.

You can also drag-and-drop selected License Keys to the destination drive in the left pane.

---

#### Note

You may use an uninstalled license on a different HMI. You can also transfer licenses from one PC-based HMI device to another over a network. For detailed information, refer to Automation License Manager Online Help.

---

**See also**

Working with License Keys and Authorizations (Page 37)

Non-licensed mode (Page 52)

Uninstalling WinCC flexible and components (Page 43)





# Startup

## 2.1 Overview

### New entries in the Windows Start menu

WinCC flexible Setup adds new entries to the Start menu of the operating system under "Simatic."

- The configuration software can be found under the following entry:  
"Start> Simatic > WinCC flexible 2008 > WinCC flexible"
- The process visualization software can be found under the following entry:  
"Start > Simatic > WinCC flexible 2008 Runtime > WinCC flexible Runtime"
- The administration program for license keys and authorizations can be found under the following entry:  
"Start > SIMATIC > License Management > Automation License Manager".
- The online help can be found under the following entry:  
"Start> Simatic > WinCC flexible 2008 > WinCC flexible help system"

In Windows Vista, the entries will be available at "Start > Programs > Siemens Automation > SIMATIC."

Start the Engineering System and create a project. Set the required user interface language in the Engineering System. Transfer the project to the HMI and then start runtime on the HMI.

### Missing Start menu entries after installation

The following Start menu entries may not be displayed for certain operating system languages (not standard languages) after installation of WinCC flexible.

- ProSave
- WinCC flexible 2008 Runtime Simulator
- - Installed software

Create a link or start the programs manually.

Path information:

- ProSave: Shared files of the SIMATIC applications \Common Files\PTProsave\PTProSave.exe
- Runtime Simulator: Shared files of the SIMATIC applications \HmiRTmSim\HmiRTmSim.exe

- - Installed software: Shared files of the SIMATIC applications \S7AVERSX\s7aversx.exe

In English language operating systems, the "Shared files of SIMATIC applications" are usually located in the folder:

C:\Program Files\Common Files\Siemens

## See also

Run WinCC flexible (Page 50)

changing the user interface language in the ES (Page 53)

Scope of delivery (Page 75)

## 2.2 Run WinCC flexible

### 2.2.1 Run WinCC flexible

#### Introduction

Run the WinCC flexible Engineering System by selecting it from the Start menu of your operating system.

#### Procedure

1. In the "Start" menu, select the "Simatic > WinCC flexible 2008 > WinCC flexible" command.
2. Use the project wizard to create a new project, or create it directly without using the project wizard. The project wizard walks you through the vital steps in configuring by offering various default settings which you can modify.

Configure the screens and screen objects in the project. Compile your project, test or simulate it, and then transfer the tested project to the HMI device.

---

#### Note

You need write permissions for the folders listed below during the initial start of WinCC flexible:

- "Documents and Settings\All Users\Application data\Siemens AG\SIMATIC WinCC flexible" and "Documents and Settings\All Users\Application data\Siemens AG\SIMATIC WinCC flexible 2008\Caches."
- Under Windows Vista: "Program Data\Siemens AG\SIMATIC WinCC flexible" and "Program Data\Siemens AG\SIMATIC WinCC flexible 2008\Caches"

The system generates template files in these folders during initial startup in the current WinCC flexible GUI language. You also require write permissions when you initially set up a new GUI language for a project.

---

**Note**

At its start, WinCC flexible outputs an error message if it cannot find Automation License Manager or your installation is corrupted. This also cancels the start of WinCC flexible. Uninstall Automation License Manager, and then reinstall it. You can find the setup for the installation on the WinCC flexible DVD in the directory CD2 under "Automation License Manager\Setup".

---

**Note**

If instead of an internet connection, a network connection is configured for a user, WinCC flexible may be very slow the first time you start it.

Make sure you have an Internet connection before the first start. Alternatively, you can disable the "Check for publisher's certificate revocation" option in Internet Explorer. The setting is in the Control Panel under Internet Options > Advanced > Security".

---

**See also**

Overview (Page 49)

Starting WinCC flexible Runtime (Page 51)

Non-licensed mode (Page 52)

## 2.2.2 Starting WinCC flexible Runtime

**Introduction**

As a general rule, you run WinCC flexible Runtime on the HMI. You may also start Runtime in a project you opened in the Engineering System.

**Procedure**

For closer details, refer to the chapter "Introducing WinCC flexible Runtime"

---

**Note**

If WinCC flexible is running on a PC, in the following cases an error message appears when you start WinCC flexible Runtime:

- The Automation License Manager is not installed.
- The Automation License Manager installation is damaged.

During operation in Runtime, the system outputs a message at intervals of 10 minutes; you need to acknowledge those messages. Uninstall Automation License Manager, and then reinstall it. You can find the setup for the installation on the WinCC flexible DVD in the directory CD2 under "Automation License Manager\Setup".

---

**See also**

Run WinCC flexible (Page 50)

### 2.2.3 Non-licensed mode

#### Introduction

WinCC flexible runs in non-licensed mode if the license key is not installed.

#### Engineering System

If you start WinCC flexible without a valid license, the system alerts you that you are working in non-licensed mode. You have the one-time option of activating a trial license. The trial license expires after 14 days.

If the trial license expires, the following scenarios can occur:

- WinCC flexible was never licensed on the PC in question.
  - WinCC flexible cannot be started.
- WinCC flexible was already licensed on the PC in question.
  - WinCC flexible cannot be started. Non-licensed mode is indicated every 10 minutes by a window, which you must acknowledge.

#### Runtime

WinCC flexible Runtime and the runtime options can be used without restrictions in the non-licensed mode. Non-licensed mode is indicated every 10 minutes by a window, which you must acknowledge.

#### To correct or avoid error

Install the license key for the respective license.

## See also

Available options (Page 25)  
Run WinCC flexible (Page 50)

## 2.2.4 changing the user interface language in the ES

### Introduction

Set the menu and dialog language of your ES user interface. You can set up the user interface, for example, for English-speaking engineers.

### Requirement

WinCC flexible set-up has installed the relevant user interface language.

### Procedure

1. Select "Settings" from the "Options" menu.  
The "Settings" dialog box is opened.
2. Click "User interface language " in the "Workbench" group.
3. In "Language", select your user interface language.
4. Confirm your entries.  
The dialog box closes.

### Result

The user interface language changes to the selected language.

---

#### Note

If you change the user interface language, when you set up the first project in this language you will require write rights to the directories:

- "Documents and Settings\All Users\Application data\Siemens AG\SIMATIC WinCC flexible" and "Documents and Settings\All Users\Application data\Siemens AG\SIMATIC WinCC flexible 2008\Caches."
- Under Windows Vista: "Program Data\Siemens AG\SIMATIC WinCC flexible" and "Program Data\Siemens AG\SIMATIC WinCC flexible 2008\Caches"

The system generates template files in these folders during initial startup in the current WinCC flexible GUI language. You also require write permissions when you initially set up a new GUI language for a project.

---

**See also**

Overview (Page 49)







## Licenses and Open Source Software

### 3.1 Open source software used in this product

#### Copyright Notices

Name	Copyright	Owner of License
TightVNC	Copyright ©	1999 AT&T Laboratories Cambridge. All Rights Reserved.
RCS	Copyright ©	1982, 1988, 1989 Walter Tichy 1990, 1991, 1992, 1993, 1994, 1995 Paul Eggert Distributed under license by the Free Software Foundation, Inc.
Xerxes	Copyright ©	Under Apache Software License, Version 1.1
OpenSSL	Copyright ©	1995-1997 Eric Young (eay@cryptsoft.com)
GoldParser	Copyright ©	Under GOLD Parser Freeware License Agreement
MMC Library V1.5	Copyright ©	Under Common Public License
zlib	Copyright ©	1995-2002 Jean-loup Gailly
#ziplib	Copyright ©	2001 Mike Krueger
libjpeg	Copyright ©	1991-1998 Thomas G. Lane
Single files of libjpeg package	Copyright ©	Various authors including: Gordon Matzigkeit, Jef Poskanzer, Per Bothner, Ge' Weijers, Lee Daniel Crocker, Mike Lijewski, Robert Hutchinson, Sam Bushell, Dan Gildor, James Arthur Boucher, David Rowley, Spencer W. Thomas et al
Info ZIP	Copyright ©	1990-2005 Info-Zip
AOSVS	Copyright ©	1990 US&T, Inc.
ATHEOS	Copyright ©	1997 Chris Herborth (chris@qnx.com) - BeOS port 2004 Ruslan Nickolaev (nruslan@hotbox.ru) - AtheOS port
REXX	Copyright ©	1994 Scott Maxwell 1996 Scott Field 1992-1998 Apple Computer, Inc 1998 Jim Luther 1995-2005 Jean-loup Gailly, Brian Raiter and Gilles Vollant

### License Conditions and Disclaimers for Free Software

The Software "WinCC flexible" (hereinafter referred to as "Software") contains the free software listed below in unmodified or modified form (hereinafter referred to as "Free Software"):

Name	License
TigthVNC	GNU GPL
RCS	GNU GPL
Xerxes	Apache License
OpenSSL	OpenSSL License
GoldParser	GoldParser license
MMC Library V1.5	Common Public License
zlib	zlib license
#zplib	GNU GPL
libjpeg	libjpeg Package License
Info ZIP	Info-ZIP license

A collection of original license texts is available in a pdf file in the folder "support/Open Source" on the WinCC flexible CD.

The Free Software is provided free of charge. You are entitled to use the Free Software in accordance with the respective license conditions (OSS License Conditions) listed below. If there are discrepancies between the OSS License Conditions and the license conditions of the Software as per clauses 2 and 3 above, the OSS License Conditions shall prevail. In case of an infringement or breach of such OSS License Conditions the respective licensor named in such OSS License Conditions is entitled - in addition to ourselves - to bring forward and enforce the respective claims resulting from such infringement or breach in its own name.

Insofar as the applicable OSS License Conditions provide for it, you can order the source code of the Free Software from your Siemens sales contact - against payment of the shipping and handling charges - for a period of at least 3 years since purchase of the Software.

### Liability for Free Software

We are liable for the Software including the Free Software contained in it in accordance with the license conditions applicable to the Software. Any liability for the Free Software beyond the program flow intended for the Software is explicitly excluded. Furthermore, any liability for defects resulting from modifications to the Free Software by you or third parties is excluded.

We do not provide any technical support for the Software if it has been modified.

### Note

**PLEASE READ THE BELOW LICENSE CONDITIONS CAREFULLY BEFORE USING THE SOFTWARE. THE ACCEPTANCE OF ANY DISCLAIMER OF WARRANTY OR LIABILITY CONTAINED IN SUCH LICENSE CONDITIONS IS A STRICT PRECONDITION FOR THE USE OF THE FREE SOFTWARE.**

## 3.2 License text of the GNU General Public License

### GNU GENERAL PUBLIC LICENSE

Version 2, June 1991

Copyright (C) 1989, 1991 Free Software Foundation, Inc.

59 Temple Place, Suite 330, Boston, MA 02111-1307 USA

Everyone is permitted to copy and distribute verbatim copies of this license document, but changing it is not allowed.

#### Preamble

The licenses for most software are designed to take away your freedom to share and change it. By contrast, the GNU General Public License is intended to guarantee your freedom to share and change free software--to ensure the software is free for all its users. This General Public License applies to most of the Free Software Foundation's software and to any other program whose authors commit to using it. (Some other Free Software Foundation software is covered by the GNU Library General Public License instead.) You can apply it to your programs, too.

When we speak of free software, we are referring to freedom, not price. Our General Public Licenses are designed to make sure that you have the freedom to distribute copies of free software (and charge for this service if you wish), that you receive source code or can get it if you want it, that you can change the software or use pieces of it in new free programs; and that you know you can do these things.

To protect your rights, we need to make restrictions that forbid anyone to deny you these rights or to ask you to surrender the rights. These restrictions translate to certain responsibilities for you if you distribute copies of the software, or if you modify it.

For example, if you distribute copies of such a program, whether gratis or for a fee, you must give the recipients all the rights that you have. You must make sure that they, too, receive or can get the source code. And you must show them these terms so they know their rights.

We protect your rights with two steps: (1) copyright the software, and (2) offer you this license which gives you legal permission to copy, distribute and/or modify the software.

Also, for each author's protection and ours, we want to make certain that everyone understands that there is no warranty for this free software. If the software is modified by someone else and passed on, we want its recipients to know that what they have is not the original, so that any problems introduced by others will not reflect on the original authors' reputations.

Finally, any free program is threatened constantly by software patents. We wish to avoid the danger that redistributors of a free program will individually obtain patent licenses, in effect making the program proprietary. To prevent this, we have made it clear that any patent must be licensed for everyone's free use or not licensed at all.

The precise terms and conditions for copying, distribution and modification follow.

#### Terms and conditions for copying, distribution and modification

1. This License applies to any program or other work which contains a notice placed by the copyright holder saying it may be distributed under the terms of this General Public

License. The "Program", below, refers to any such program or work, and a "work based on the Program" means either the Program or any derivative work under copyright law: that is to say, a work containing the Program or a portion of it, either verbatim or with modifications and/or translated into another language. (Hereinafter, translation is included without limitation in the term "modification".) Each licensee is addressed as "you". Activities other than copying, distribution and modification are not covered by this License; they are outside its scope. The act of running the Program is not restricted, and the output from the Program is covered only if its contents constitute a work based on the Program (independent of having been made by running the Program). Whether that is true depends on what the Program does.

2. You may copy and distribute verbatim copies of the Program's source code as you receive it, in any medium, provided that you conspicuously and appropriately publish on each copy an appropriate copyright notice and disclaimer of warranty; keep intact all the notices that refer to this License and to the absence of any warranty; and give any other recipients of the Program a copy of this License along with the Program.  
You may charge a fee for the physical act of transferring a copy, and you may at your option offer warranty protection in exchange for a fee.
3. You may modify your copy or copies of the Program or any portion of it, thus forming a work based on the Program, and copy and distribute such modifications or work under the terms of Section 1 above, provided that you also meet all of these conditions:
  - a) You must cause the modified files to carry prominent notices stating that you changed the files and the date of any change.
  - b) You must cause any work that you distribute or publish, that in whole or in part contains or is derived from the Program or any part thereof, to be licensed as a whole at no charge to all third parties under the terms of this License.
  - c) If the modified program normally reads commands interactively when run, you must cause it, when started running for such interactive use in the most ordinary way, to print or display an announcement including an appropriate copyright notice and a notice that there is no warranty (or else, saying that you provide a warranty) and that users may redistribute the program under these conditions, and telling the user how to view a copy of this License. (Exception: if the Program itself is interactive but does not normally print such an announcement, your work based on the Program is not required to print an announcement.)These requirements apply to the modified work as a whole. If identifiable sections of that work are not derived from the Program, and can be reasonably considered independent and separate works in themselves, then this License, and its terms, does not apply to those sections when you distribute them as separate works. But when you distribute the same sections as part of a whole which is a work based on the Program, the distribution of the whole must be on the terms of this License, whose permissions for other licensees extend to the entire whole, and thus to each and every part regardless of who wrote it. Thus, it is not the intent of this section to claim rights or contest your rights to work written entirely by you; rather, the intent is to exercise the right to control the distribution of derivative or collective works based on the Program.  
In addition, mere aggregation of another work not based on the Program with the Program (or with a work based on the Program) on a volume of a storage or distribution medium does not bring the other work under the scope of this License.
4. You may copy and distribute the Program (or a work based on it, under Section 2) in object code or executable form under the terms of Sections 1 and 2 above provided that you also do one of the following:
  - a) Accompany it with the complete corresponding machine-readable source code, which must be distributed under the terms of Sections 1 and 2 above on a medium customarily used for software interchange; or,
  - b) Accompany it with a written offer, valid for at least three years, to give any third party, for a charge no more than your cost of physically performing source distribution, a

complete machine-readable copy of the corresponding source code, to be distributed under the terms of Sections 1 and 2 above on a medium customarily used for software interchange; or,

c) Accompany it with the information you received as to the offer to distribute corresponding source code. (This alternative is allowed only for noncommercial distribution and only if you received the program in object code or executable form with such an offer, in accord with Subsection b above.)

The source code for a work means the preferred form of the work for making modifications to it. For an executable work, complete source code means all the source code for all modules it contains, plus any associated interface definition files, plus the scripts used to control compilation and installation of the executable. However, as a special exception, the source code distributed need not include anything that is normally distributed (in either source or binary form) with the major components (compiler, kernel, and so on) of the operating system on which the executable runs, unless that component itself accompanies the executable.

If distribution of executable or object code is made by offering access to copy from a designated place, then offering equivalent access to copy the source code from the same place counts as distribution of the source code, even though third parties are not compelled to copy the source along with the object code.

5. You may not copy, modify, sublicense, or distribute the Program except as expressly provided under this License. Any attempt otherwise to copy, modify, sublicense or distribute the Program is void, and will automatically terminate your rights under this License. However, parties who have received copies, or rights, from you under this License will not have their licenses terminated so long as such parties remain in full compliance.
6. You are not required to accept this License, since you have not signed it. However, nothing else grants you permission to modify or distribute the Program or its derivative works. These actions are prohibited by law if you do not accept this License. Therefore, by modifying or distributing the Program (or any work based on the Program), you indicate your acceptance of this License to do so, and all its terms and conditions for copying, distributing or modifying the Program or works based on it.
7. Each time you redistribute the Program (or any work based on the Program), the recipient automatically receives a license from the original licensor to copy, distribute or modify the Program subject to these terms and conditions. You may not impose any further restrictions on the recipients' exercise of the rights granted herein. You are not responsible for enforcing compliance by third parties to this License.
8. If, as a consequence of a court judgment or allegation of patent infringement or for any other reason (not limited to patent issues), conditions are imposed on you (whether by court order, agreement or otherwise) that contradict the conditions of this License, they do not excuse you from the conditions of this License. If you cannot distribute so as to satisfy simultaneously your obligations under this License and any other pertinent obligations, then as a consequence you may not distribute the Program at all. For example, if a patent license would not permit royalty-free redistribution of the Program by all those who receive copies directly or indirectly through you, then the only way you could satisfy both it and this License would be to refrain entirely from distribution of the Program.

If any portion of this section is held invalid or unenforceable under any particular circumstance, the balance of the section is intended to apply and the section as a whole is intended to apply in other circumstances.

It is not the purpose of this section to induce you to infringe any patents or other property right claims or to contest validity of any such claims; this section has the sole purpose of protecting the integrity of the free software distribution system, which is implemented by public license practices. Many people have made generous contributions to the wide

range of software distributed through that system in reliance on consistent application of that system; it is up to the author/donor to decide if he or she is willing to distribute software through any other system and a licensee cannot impose that choice. This section is intended to make thoroughly clear what is believed to be a consequence of the rest of this License.

9. If the distribution and/or use of the Program is restricted in certain countries either by patents or by copyrighted interfaces, the original copyright holder who places the Program under this License may add an explicit geographical distribution limitation excluding those countries, so that distribution is permitted only in or among countries not thus excluded. In such case, this License incorporates the limitation as if written in the body of this License.
10. The Free Software Foundation may publish revised and/or new versions of the General Public License from time to time. Such new versions will be similar in spirit to the present version, but may differ in detail to address new problems or concerns. Each version is given a distinguishing version number. If the Program specifies a version number of this License which applies to it and "any later version", you have the option of following the terms and conditions either of that version or of any later version published by the Free Software Foundation. If the Program does not specify a version number of this License, you may choose any version ever published by the Free Software Foundation.
11. If you wish to incorporate parts of the Program into other free programs whose distribution conditions are different, write to the author to ask for permission. For software which is copyrighted by the Free Software Foundation, write to the Free Software Foundation; we sometimes make exceptions for this. Our decision will be guided by the two goals of preserving the free status of all derivatives of our free software and of promoting the sharing and reuse of software generally.
12. NO WARRANTY
13. BECAUSE THE PROGRAM IS LICENSED FREE OF CHARGE, THERE IS NO WARRANTY FOR THE PROGRAM, TO THE EXTENT PERMITTED BY APPLICABLE LAW. EXCEPT WHEN OTHERWISE STATED IN WRITING THE COPYRIGHT HOLDERS AND/OR OTHER PARTIES PROVIDE THE PROGRAM "AS IS" WITHOUT WARRANTY OF ANY KIND, EITHER EXPRESSED OR IMPLIED, INCLUDING, BUT NOT LIMITED TO, THE IMPLIED WARRANTIES OF MERCHANTABILITY AND FITNESS FOR A PARTICULAR PURPOSE. THE ENTIRE RISK AS TO THE QUALITY AND PERFORMANCE OF THE PROGRAM IS WITH YOU. SHOULD THE PROGRAM PROVE DEFECTIVE, YOU ASSUME THE COST OF ALL NECESSARY SERVICING, REPAIR OR CORRECTION.
14. IN NO EVENT UNLESS REQUIRED BY APPLICABLE LAW OR AGREED TO IN WRITING WILL ANY COPYRIGHT HOLDER, OR ANY OTHER PARTY WHO MAY MODIFY AND/OR REDISTRIBUTE THE PROGRAM AS PERMITTED ABOVE, BE LIABLE TO YOU FOR DAMAGES, INCLUDING ANY GENERAL, SPECIAL, INCIDENTAL OR CONSEQUENTIAL DAMAGES ARISING OUT OF THE USE OR INABILITY TO USE THE PROGRAM (INCLUDING BUT NOT LIMITED TO LOSS OF DATA OR DATA BEING RENDERED INACCURATE OR LOSSES SUSTAINED BY YOU OR THIRD PARTIES OR A FAILURE OF THE PROGRAM TO OPERATE WITH ANY OTHER PROGRAMS), EVEN IF SUCH HOLDER OR OTHER PARTY HAS BEEN ADVISED OF THE POSSIBILITY OF SUCH DAMAGES.

## How to Apply These Terms to Your New Programs

If you develop a new program, and you want it to be of the greatest possible use to the public, the best way to achieve this is to make it free software which everyone can redistribute and change under these terms.

To do so, attach the following notices to the program. It is safest to attach them to the start of each source file to most effectively convey the exclusion of warranty; and each file should have at least the "copyright" line and a pointer to where the full notice is found.

- <one line to give the program's name and a brief idea of what it does.> Copyright (C) <year> <name of author>
- This program is free software; you can redistribute it and/or modify it under the terms of the GNU General Public License as published by the Free Software Foundation; either version 2 of the License, or (at your option) any later version.
- This program is distributed in the hope that it will be useful, but WITHOUT ANY WARRANTY; without even the implied warranty of MERCHANTABILITY or FITNESS FOR A PARTICULAR PURPOSE. See the GNU General Public License for more details.
- You should have received a copy of the GNU General Public License along with this program; if not, write to the Free Software Foundation, Inc., 59 Temple Place, Suite 330, Boston, MA 02111-1307 USA

Also add information on how to contact you by electronic and paper mail.

If the program is interactive, make it output a short notice like this when it starts in an interactive mode:

- Gnomovision version 69, Copyright (C) year name of author
- Gnomovision comes with ABSOLUTELY NO WARRANTY; for details type `show w'.
- This is free software, and you are welcome to redistribute it under certain conditions; type `show c' for details.

The hypothetical commands `show w' and `show c' should show the appropriate parts of the General Public License. Of course, the commands you use may be called something other than `show w' and `show c'; they could even be mouse-clicks or menu items--whatever suits your program.

You should also get your employer (if you work as a programmer) or your school, if any, to sign a "copyright disclaimer" for the program, if necessary. Here is a sample; alter the names:

- Yoyodyne, Inc., hereby disclaims all copyright interest in the program
- `Gnomovision' (which makes passes at compilers) written by James Hacker.
- <signature of Ty Coon>, 1 April 1989
- Ty Coon, President of Vice

This General Public License does not permit incorporating your program into proprietary programs. If your program is a subroutine library, you may consider it more useful to permit linking proprietary applications with the library. If this is what you want to do, use the GNU Lesser General Public License instead of this License.

### 3.3 License text of the Apache Software License, Version 1.1

#### The Apache Software License, Version 1.1

Copyright (c) 2001 The Apache Software Foundation. All rights reserved.

Redistribution and use in source and binary forms, with or without modification, are permitted provided that the following conditions are met:

1. Redistributions of source code must retain the above copyright notice, this list of conditions and the following disclaimer.
2. Redistributions in binary form must reproduce the above copyright notice, this list of conditions and the following disclaimer in the documentation and/or other materials provided with the distribution.
3. The end-user documentation included with the redistribution, if any, must include the following acknowledgment: "This product includes software developed by the Apache Software Foundation (<http://www.apache.org/>)." Alternately, this acknowledgment may appear in the software itself, if and wherever such third-party acknowledgments normally appear.
4. The names "Apache", "Jakarta", "JAMES" and "Apache Software Foundation" must not be used to endorse or promote products derived from this software without prior written permission. For written permission, please contact [apache@apache.org](mailto:apache@apache.org).
5. Products derived from this software may not be called "Apache", nor may "Apache" appear in their name, without prior written permission of the Apache Software Foundation.

THIS SOFTWARE IS PROVIDED ``AS IS" AND ANY EXPRESSED OR IMPLIED WARRANTIES, INCLUDING, BUT NOT LIMITED TO, THE IMPLIED WARRANTIES OF MERCHANTABILITY AND FITNESS FOR A PARTICULAR PURPOSE ARE DISCLAIMED. IN NO EVENT SHALL THE APACHE SOFTWARE FOUNDATION OR ITS CONTRIBUTORS BE LIABLE FOR ANY DIRECT, INDIRECT, INCIDENTAL, SPECIAL, EXEMPLARY, OR CONSEQUENTIAL DAMAGES (INCLUDING, BUT NOT LIMITED TO, PROCUREMENT OF SUBSTITUTE GOODS OR SERVICES; LOSS OF USE, DATA, OR PROFITS; OR BUSINESS INTERRUPTION) HOWEVER CAUSED AND ON ANY THEORY OF LIABILITY, WHETHER IN CONTRACT, STRICT LIABILITY, OR TORT (INCLUDING NEGLIGENCE OR OTHERWISE) ARISING IN ANY WAY OUT OF THE USE OF THIS SOFTWARE, EVEN IF ADVISED OF THE POSSIBILITY OF SUCH DAMAGE.

This software consists of voluntary contributions made by many individuals on behalf of the Apache Software Foundation. For more information on the Apache Software Foundation, please see <http://www.apache.org/>.

Portions of this software are based upon public domain software originally written at the National Center for Supercomputing Applications, University of Illinois, Urbana-Champaign.

### 3.4 License text of the OpenSSL license

#### License

This is a copy of the current LICENSE file inside the CVS repository.



## License Issues

The OpenSSL toolkit stays under a dual license, i.e. both the conditions of the OpenSSL License and the original SSLeay license apply to the toolkit. See below for the actual license texts. Actually both licenses are BSD-style Open Source licenses. In case of any license issues related to OpenSSL please contact [openssl-core@openssl.org](mailto:openssl-core@openssl.org).

## OpenSSL License

Copyright (c) 1998-2005 The OpenSSL Project. All rights reserved.

Redistribution and use in source and binary forms, with or without modification, are permitted provided that the following conditions are met:

1. Redistributions of source code must retain the above copyright notice, this list of conditions and the following disclaimer.
2. Redistributions in binary form must reproduce the above copyright notice, this list of conditions and the following disclaimer in the documentation and/or other materials provided with the distribution.
3. All advertising materials mentioning features or use of this software must display the following acknowledgment: "This product includes software developed by the OpenSSL Project for use in the OpenSSL Toolkit. (<http://www.openssl.org/>)"
4. The names "OpenSSL Toolkit" and "OpenSSL Project" must not be used to endorse or promote products derived from this software without prior written permission. For written permission, please contact [openssl-core@openssl.org](mailto:openssl-core@openssl.org).
5. Products derived from this software may not be called "OpenSSL" nor may "OpenSSL" appear in their names without prior written permission of the OpenSSL Project.
6. Redistributions of any form whatsoever must retain the following acknowledgment: "This product includes software developed by the OpenSSL Project for use in the OpenSSL Toolkit (<http://www.openssl.org/>)"

THIS SOFTWARE IS PROVIDED BY THE OpenSSL PROJECT ``AS IS'' AND ANY EXPRESSED OR IMPLIED WARRANTIES, INCLUDING, BUT NOT LIMITED TO, THE IMPLIED WARRANTIES OF MERCHANTABILITY AND FITNESS FOR A PARTICULAR PURPOSE ARE DISCLAIMED. IN NO EVENT SHALL THE OpenSSL PROJECT OR ITS CONTRIBUTORS BE LIABLE FOR ANY DIRECT, INDIRECT, INCIDENTAL, SPECIAL, EXEMPLARY, OR CONSEQUENTIAL DAMAGES (INCLUDING, BUT NOT LIMITED TO, PROCUREMENT OF SUBSTITUTE GOODS OR SERVICES; LOSS OF USE, DATA, OR PROFITS; OR BUSINESS INTERRUPTION) HOWEVER CAUSED AND ON ANY THEORY OF LIABILITY, WHETHER IN CONTRACT, STRICT LIABILITY, OR TORT (INCLUDING NEGLIGENCE OR OTHERWISE) ARISING IN ANY WAY OUT OF THE USE OF THIS SOFTWARE, EVEN IF ADVISED OF THE POSSIBILITY OF SUCH DAMAGE.

This product includes cryptographic software written by Eric Young ([eay@cryptsoft.com](mailto:eay@cryptsoft.com)).  
This product includes software written by Tim Hudson ([tjh@cryptsoft.com](mailto:tjh@cryptsoft.com)).

## Original SSLeay License

Copyright (C) 1995-1998 Eric Young ([eay@cryptsoft.com](mailto:eay@cryptsoft.com))

All rights reserved.

This package is an SSL implementation written by Eric Young ([eay@cryptsoft.com](mailto:eay@cryptsoft.com)).

The implementation was written so as to conform with Netscapes SSL.

This library is free for commercial and non-commercial use as long as the following conditions are adhered to. The following conditions apply to all code found in this distribution, be it the RC4, RSA, lhash, DES, etc., code; not just the SSL code. The SSL documentation included with this distribution is covered by the same copyright terms except that the holder is Tim Hudson (tjh@cryptsoft.com). Copyright remains Eric Young's, and as such any Copyright notices in the code are not to be removed.

If this package is used in a product, Eric Young should be given attribution as the author of the parts of the library used. This can be in the form of a textual message at program startup or in documentation (online or textual) provided with the package.

Redistribution and use in source and binary forms, with or without modification, are permitted provided that the following conditions are met:

1. Redistributions of source code must retain the copyright notice, this list of conditions and the following disclaimer.
2. Redistributions in binary form must reproduce the above copyright notice, this list of conditions and the following disclaimer in the documentation and/or other materials provided with the distribution.
3. All advertising materials mentioning features or use of this software must display the following acknowledgement: "This product includes cryptographic software written by Eric Young (eay@cryptsoft.com)" The word 'cryptographic' can be left out if the routines from the library being used are not cryptographic related :-).
4. If you include any Windows specific code (or a derivative thereof) from the apps directory (application code) you must include an acknowledgement: "This product includes software written by Tim Hudson (tjh@cryptsoft.com)"

THIS SOFTWARE IS PROVIDED BY ERIC YOUNG "AS IS" AND ANY EXPRESS OR IMPLIED WARRANTIES, INCLUDING, BUT NOT LIMITED TO, THE IMPLIED WARRANTIES OF MERCHANTABILITY AND FITNESS FOR A PARTICULAR PURPOSE ARE DISCLAIMED. IN NO EVENT SHALL THE AUTHOR OR CONTRIBUTORS BE LIABLE FOR ANY DIRECT, INDIRECT, INCIDENTAL, SPECIAL, EXEMPLARY, OR CONSEQUENTIAL DAMAGES (INCLUDING, BUT NOT LIMITED TO, PROCUREMENT OF SUBSTITUTE GOODS OR SERVICES; LOSS OF USE, DATA, OR PROFITS; OR BUSINESS INTERRUPTION) HOWEVER CAUSED AND ON ANY THEORY OF LIABILITY, WHETHER IN CONTRACT, STRICT LIABILITY, OR TORT (INCLUDING NEGLIGENCE OR OTHERWISE) ARISING IN ANY WAY OUT OF THE USE OF THIS SOFTWARE, EVEN IF ADVISED OF THE POSSIBILITY OF SUCH DAMAGE.

The licence and distribution terms for any publically available version or derivative of this code cannot be changed. i.e. this code cannot simply be copied and put under another distribution licence [including the GNU Public Licence.]

## **3.5 License text of the Gold Parser license**

### **The GOLD Parser Freeware License Agreement**

This software is provided 'as-is', without any expressed or implied warranty. In no event will the author(s) be held liable for any damages arising from the use of this software.

Permission is granted to anyone to use this software for any purpose. If you use this software in a product, an acknowledgment in the product documentation would be deeply appreciated but is not required.

In the case of the GOLD Parser Engine source code, permission is granted to anyone to alter it and redistribute it freely, subject to the following restrictions:

1. The origin of this software must not be misrepresented; you must not claim that you wrote the original software.
2. Altered source versions must be plainly marked as such, and must not be misrepresented as being the original software.
3. This notice may not be removed or altered from any source distribution.

## 3.6 License text of the Common Public license

### Common Public License Version 1.0

THE ACCOMPANYING PROGRAM IS PROVIDED UNDER THE TERMS OF THIS COMMON PUBLIC LICENSE ("AGREEMENT"). ANY USE, REPRODUCTION OR DISTRIBUTION OF THE PROGRAM CONSTITUTES RECIPIENT'S ACCEPTANCE OF THIS AGREEMENT.

#### 1. DEFINITIONS

"Contribution" means:

- a) in the case of the initial Contributor, the initial code and documentation distributed under this Agreement, and
- b) in the case of each subsequent Contributor:
  - i) changes to the Program, and
  - ii) additions to the Program;

where such changes and/or additions to the Program originate from and are distributed by that particular Contributor. A Contribution 'originates' from a Contributor if it was added to the Program by such Contributor itself or anyone acting on such Contributor's behalf. Contributions do not include additions to the Program which: (i) are separate modules of software distributed in conjunction with the Program under their own license agreement, and (ii) are not derivative works of the Program.

"Contributor" means any person or entity that distributes the Program.

"Licensed Patents " mean patent claims licensable by a Contributor which are necessarily infringed by the use or sale of its Contribution alone or when combined with the Program.

"Program" means the Contributions distributed in accordance with this Agreement.

"Recipient" means anyone who receives the Program under this Agreement, including all Contributors.

#### 2. GRANT OF RIGHTS

- a) Subject to the terms of this Agreement, each Contributor hereby grants Recipient a non-exclusive, worldwide, royalty-free copyright license to reproduce, prepare derivative works of, publicly display, publicly perform, distribute and sublicense the Contribution of such Contributor, if any, and such derivative works, in source code and object code form.

b) Subject to the terms of this Agreement, each Contributor hereby grants Recipient a non-exclusive, worldwide, royalty-free patent license under Licensed Patents to make, use, sell, offer to sell, import and otherwise transfer the Contribution of such Contributor, if any, in source code and object code form. This patent license shall apply to the combination of the Contribution and the Program if, at the time the Contribution is added by the Contributor, such addition of the Contribution causes such combination to be covered by the Licensed Patents. The patent license shall not apply to any other combinations which include the Contribution. No hardware per se is licensed hereunder.

c) Recipient understands that although each Contributor grants the licenses to its Contributions set forth herein, no assurances are provided by any Contributor that the Program does not infringe the patent or other intellectual property rights of any other entity. Each Contributor disclaims any liability to Recipient for claims brought by any other entity based on infringement of intellectual property rights or otherwise. As a condition to exercising the rights and licenses granted hereunder, each Recipient hereby assumes sole responsibility to secure any other intellectual property rights needed, if any. For example, if a third party patent license is required to allow Recipient to distribute the Program, it is Recipient's responsibility to acquire that license before distributing the Program.

d) Each Contributor represents that to its knowledge it has sufficient copyright rights in its Contribution, if any, to grant the copyright license set forth in this Agreement.

### 3. REQUIREMENTS

A Contributor may choose to distribute the Program in object code form under its own license agreement, provided that:

- a) it complies with the terms and conditions of this Agreement; and
- b) its license agreement:
  - i) effectively disclaims on behalf of all Contributors all warranties and conditions, express and implied, including warranties or conditions of title and non-infringement, and implied warranties or conditions of merchantability and fitness for a particular purpose;
  - ii) effectively excludes on behalf of all Contributors all liability for damages, including direct, indirect, special, incidental and consequential damages, such as lost profits;
  - iii) states that any provisions which differ from this Agreement are offered by that Contributor alone and not by any other party; and
  - iv) states that source code for the Program is available from such Contributor, and informs licensees how to obtain it in a reasonable manner on or through a medium customarily used for software exchange.

When the Program is made available in source code form:

- a) it must be made available under this Agreement; and
- b) a copy of this Agreement must be included with each copy of the Program.

Contributors may not remove or alter any copyright notices contained within the Program.

Each Contributor must identify itself as the originator of its Contribution, if any, in a manner that reasonably allows subsequent Recipients to identify the originator of the Contribution.

### 4. COMMERCIAL DISTRIBUTION

Commercial distributors of software may accept certain responsibilities with respect to end users, business partners and the like. While this license is

intended to facilitate the commercial use of the Program, the Contributor who includes the Program in a commercial product offering should do so in a manner which does not create potential liability for other Contributors. Therefore, if a Contributor includes the Program in a commercial product offering, such Contributor ("Commercial Contributor") hereby agrees to defend and indemnify every other Contributor ("Indemnified Contributor") against any losses, damages and costs (collectively "Losses") arising from claims, lawsuits and other legal actions brought by a third party against the Indemnified Contributor to the extent caused by the acts or omissions of such Commercial Contributor in connection with its distribution of the Program in a commercial product offering. The obligations in this section do not apply to any claims or Losses relating to any actual or alleged intellectual property infringement. In order to qualify, an Indemnified Contributor must: a) promptly notify the Commercial Contributor in writing of such claim, and b) allow the Commercial Contributor to control, and cooperate with the Commercial Contributor in, the defense and any related settlement negotiations. The Indemnified Contributor may participate in any such claim at its own expense.

For example, a Contributor might include the Program in a commercial product offering, Product X. That Contributor is then a Commercial Contributor. If that Commercial Contributor then makes performance claims, or offers warranties related to Product X, those performance claims and warranties are such Commercial Contributor's responsibility alone. Under this section, the Commercial Contributor would have to defend claims against the other Contributors related to those performance claims and warranties, and if a court requires any other Contributor to pay any damages as a result, the Commercial Contributor must pay those damages.

## **5. NO WARRANTY**

EXCEPT AS EXPRESSLY SET FORTH IN THIS AGREEMENT, THE PROGRAM IS PROVIDED ON AN "AS IS" BASIS, WITHOUT WARRANTIES OR CONDITIONS OF ANY KIND, EITHER EXPRESS OR IMPLIED INCLUDING, WITHOUT LIMITATION, ANY WARRANTIES OR CONDITIONS OF TITLE, NON-INFRINGEMENT, MERCHANTABILITY OR FITNESS FOR A PARTICULAR PURPOSE. Each Recipient is solely responsible for determining the appropriateness of using and distributing the Program and assumes all risks associated with its exercise of rights under this Agreement, including but not limited to the risks and costs of program errors, compliance with applicable laws, damage to or loss of data, programs or equipment, and unavailability or interruption of operations.

## **6. DISCLAIMER OF LIABILITY**

EXCEPT AS EXPRESSLY SET FORTH IN THIS AGREEMENT, NEITHER RECIPIENT NOR ANY CONTRIBUTORS SHALL HAVE ANY LIABILITY FOR ANY DIRECT, INDIRECT, INCIDENTAL, SPECIAL, EXEMPLARY, OR CONSEQUENTIAL DAMAGES (INCLUDING WITHOUT LIMITATION LOST PROFITS), HOWEVER CAUSED AND ON ANY THEORY OF LIABILITY, WHETHER IN CONTRACT, STRICT LIABILITY, OR TORT (INCLUDING NEGLIGENCE OR OTHERWISE) ARISING IN ANY WAY OUT OF THE USE OR DISTRIBUTION OF THE PROGRAM OR THE EXERCISE OF ANY RIGHTS GRANTED HEREUNDER, EVEN IF ADVISED OF THE POSSIBILITY OF SUCH DAMAGES.

## **7. GENERAL**

If any provision of this Agreement is invalid or unenforceable under applicable law, it shall not affect the validity or enforceability of the remainder of the terms of this Agreement, and without further action by the parties hereto, such provision shall be reformed to the minimum extent necessary to make such provision valid and enforceable.

If Recipient institutes patent litigation against a Contributor with respect to a patent applicable to software (including a cross-claim or counterclaim in a lawsuit), then any patent licenses granted by that Contributor to such Recipient under this Agreement shall terminate as of the date such litigation is filed. In addition, if Recipient institutes patent litigation against any entity (including a cross-claim or counterclaim in a lawsuit) alleging that the Program itself (excluding combinations of the Program with other software or hardware) infringes such Recipient's patent(s), then such Recipient's rights granted under Section 2(b) shall terminate as of the date such litigation is filed.

All Recipient's rights under this Agreement shall terminate if it fails to comply with any of the material terms or conditions of this Agreement and does not cure such failure in a reasonable period of time after becoming aware of such noncompliance. If all Recipient's rights under this Agreement terminate, Recipient agrees to cease use and distribution of the Program as soon as reasonably practicable. However, Recipient's obligations under this Agreement and any licenses granted by Recipient relating to the Program shall continue and survive.

Everyone is permitted to copy and distribute copies of this Agreement, but in order to avoid inconsistency the Agreement is copyrighted and may only be modified in the following manner. The Agreement Steward reserves the right to publish new versions (including revisions) of this Agreement from time to time. No one other than the Agreement Steward has the right to modify this Agreement. IBM is the initial Agreement Steward. IBM may assign the responsibility to serve as the Agreement Steward to a suitable separate entity. Each new version of the Agreement will be given a distinguishing version number. The Program (including Contributions) may always be distributed subject to the version of the Agreement under which it was received. In addition, after a new version of the Agreement is published, Contributor may elect to distribute the Program (including its Contributions) under the new version. Except as expressly stated in Sections 2(a) and 2(b) above, Recipient receives no rights or licenses to the intellectual property of any Contributor under this Agreement, whether expressly, by implication, estoppel or otherwise. All rights in the Program not expressly granted under this Agreement are reserved.

This Agreement is governed by the laws of the State of New York and the intellectual property laws of the United States of America. No party to this Agreement will bring a legal action under this Agreement more than one year after the cause of action arose. Each party waives its rights to a jury trial in any resulting litigation.

## 3.7 License text of the zlib license

### License

`zlib.h` -- interface of the 'zlib' general purpose compression library

version 1.2.2, October 3rd, 2004

Copyright (C) 1995-2004 Jean-loup Gailly and Mark Adler

This software is provided 'as-is', without any express or implied warranty. In no event will the authors be held liable for any damages arising from the use of this software. Permission is granted to anyone to use this software for any purpose, including commercial applications, and to alter it and redistribute it freely, subject to the following restrictions:

1. The origin of this software must not be misrepresented; you must not claim that you wrote the original software. If you use this software in a product, an acknowledgment in the product documentation would be appreciated but is not required.

2. Altered source versions must be plainly marked as such, and must not be misrepresented as being the original software.

3. This notice may not be removed or altered from any source distribution.

Jean-loup Gailly jloup@gzip.org

Mark Adler madler@alumni.caltech.edu

## 3.8 License text of the libjpeg package license

### libjpeg Package License

LEGAL ISSUES

=====

In plain English:

1. We don't promise that this software works. (But if you find any bugs, please let us know!)
2. You can use this software for whatever you want. You don't have to pay us.
3. You may not pretend that you wrote this software. If you use it in a program, you must acknowledge somewhere in your documentation that you've used the IJG code.

In legalese:

The authors make NO WARRANTY or representation, either express or implied, with respect to this software, its quality, accuracy, merchantability, or fitness for a particular purpose. This software is provided "AS IS", and you, its user, assume the entire risk as to its quality and accuracy.

This software is copyright (C) 1991-1998, Thomas G. Lane.

All Rights Reserved except as specified below.

Permission is hereby granted to use, copy, modify, and distribute this software (or portions thereof) for any purpose, without fee, subject to these conditions:

(1) If any part of the source code for this software is distributed, then this README file must be included, with this copyright and no-warranty notice unaltered; and any additions, deletions, or changes to the original files must be clearly indicated in accompanying documentation.

(2) If only executable code is distributed, then the accompanying

documentation must state that "this software is based in part on the work of the Independent JPEG Group".

(3) Permission for use of this software is granted only if the user accepts full responsibility for any undesirable consequences; the authors accept NO LIABILITY for damages of any kind.

These conditions apply to any software derived from or based on the IJG code, not just to the unmodified library. If you use our work, you ought to acknowledge us.

Permission is NOT granted for the use of any IJG author's name or company name in advertising or publicity relating to this software or products derived from it. This software may be referred to only as "the Independent JPEG Group's software".

We specifically permit and encourage the use of this software as the basis of commercial products, provided that all warranty or liability claims are assumed by the product vendor.

ansi2knr.c is included in this distribution by permission of L. Peter Deutsch, sole proprietor of its copyright holder, Aladdin Enterprises of Menlo Park, CA. ansi2knr.c is NOT covered by the above copyright and conditions, but instead by the usual distribution terms of the Free Software Foundation; principally, that you must include source code if you redistribute it. (See the file ansi2knr.c for full details.) However, since ansi2knr.c is not needed as part of any program generated from the IJG code, this does not limit you more than the foregoing paragraphs do.

The Unix configuration script "configure" was produced with GNU Autoconf. It is copyright by the Free Software Foundation but is freely distributable. The same holds for its supporting scripts (config.guess, config.sub, ltconfig, ltmain.sh). Another support script, install-sh, is copyright by M.I.T. but is also freely distributable.

It appears that the arithmetic coding option of the JPEG spec is covered by patents owned by IBM, AT&T, and Mitsubishi. Hence arithmetic coding cannot



legally be used without obtaining one or more licenses. For this reason, support for arithmetic coding has been removed from the free JPEG software. (Since arithmetic coding provides only a marginal gain over the unpatented Huffman mode, it is unlikely that very many implementations will support it.) So far as we are aware, there are no patent restrictions on the remaining code.

The IJG distribution formerly included code to read and write GIF files. To avoid entanglement with the Unisys LZW patent, GIF reading support has been removed altogether, and the GIF writer has been simplified to produce "uncompressed GIFs". This technique does not use the LZW algorithm; the resulting GIF files are larger than usual, but are readable by all standard GIF decoders.

We are required to state that

"The Graphics Interchange Format(c) is the Copyright property of CompuServe Incorporated. GIF(sm) is a Service Mark property of CompuServe Incorporated."

## **3.9 License text of the Info-ZIP license**

### **Info-ZIP license**

This is version 2005-Feb-10 of the Info-ZIP license.

The definitive version of this document should be available at <ftp://ftp.info-zip.org/pub/infozip/license.html> indefinitely and a copy at <http://www.info-zip.org/pub/infozip/license.html>.

Copyright (c) 1990-2005 Info-ZIP. All rights reserved.

For the purposes of this copyright and license, "Info-ZIP" is defined as the following set of individuals:

Mark Adler, John Bush, Karl Davis, Harald Denker, Jean-Michel Dubois, Jean-loup Gailly, Hunter Goatley, Ed Gordon, Ian Gorman, Chris Herborth, Dirk Haase, Greg Hartwig, Robert Heath, Jonathan Hudson, Paul Kienitz, David Kirschbaum, Johnny Lee, Onno van der Linden, Igor Mandrichenko, Steve P. Miller, Sergio Monesi, Keith Owens, George Petrov, Greg Roelofs, Kai Uwe Rommel, Steve Salisbury, Dave Smith, Steven M. Schweda, Christian Spieler, Cosmin Truta, Antoine Verheijen, Paul von Behren, Rich Wales, Mike White.

This software is provided "as is," without warranty of any kind, express or implied. In no event shall Info-ZIP or its contributors be held liable for any direct, indirect, incidental, special or consequential damages arising out of the use of or inability to use this software.

Permission is granted to anyone to use this software for any purpose, including commercial applications, and to alter it and redistribute it freely, subject to the above disclaimer and the following restrictions:

1. Redistributions of source code (in whole or in part) must retain the above copyright notice, definition, disclaimer, and this list of conditions.
2. Redistributions in binary form (compiled executables and libraries) must reproduce the above copyright notice, definition, disclaimer, and this list of conditions in documentation and/or other materials provided with the distribution. The sole exception to this condition is redistribution of a standard UnZipSFX binary (including SFXWiz) as part of a self-extracting archive; that is permitted without inclusion of this license, as long as the normal SFX banner has not been removed from the binary or disabled.
3. Altered versions--including, but not limited to, ports to new operating systems, existing ports with new graphical interfaces, versions with modified or added functionality, and dynamic, shared, or static library versions not from Info-ZIP--must be plainly marked as such and must not be misrepresented as being the original source or, if binaries, compiled from the original source. Such altered versions also must not be misrepresented as being Info-ZIP releases--including, but not limited to, labeling of the altered versions with the names "Info-ZIP" (or any variation thereof, including, but not limited to, different capitalizations), "Pocket UnZip," "WiZ" or "MacZip" without the explicit permission of Info-ZIP. Such altered versions are further prohibited from misrepresentative use of the Zip-Bugs or Info-ZIP e-mail addresses or the Info-ZIP URL(s), such as to imply Info-ZIP will provide support for the altered versions.
4. Info-ZIP retains the right to use the names "Info-ZIP," "Zip," "UnZip," "UnZipSFX," "WiZ," "Pocket UnZip," "Pocket Zip," and "MacZip" for its own source and binary releases.

## Appendix

### 4.1 Scope of delivery

#### General

Components supplied with WinCC flexible:

Component	Advanced/Standard/Compact
<b>Software on DVD</b>	X
Engineering tools for the configuration of WinCC flexible Runtime and HMIs	X
WinCC flexible Version Management option <sup>1)</sup>	X
For information about Simulation for WinCC flexible Runtime and relevant HMI devices, refer to "Components of WinCC flexible."	
Automation License Manager	X
ProSave	X
Electronic documentation in PDF format	
<b>Floating License, including the license key</b>	X
Certificate of license	X
License key from USB memory stick	X

- 1) The licenses for WinCC flexible Version Management must be purchased separately for each engineering station.

The package includes drivers for the communication between the HMI and the different PLCs, as well as drivers for STEP 7, STEP 5, or OPC.

#### Labeling strips for HMI devices

The templates for HMI device labeling strips are available on your WinCC flexible DVD, in the "CD3\documents\[language]\slides" folder or in the "SIMATIC WinCC flexible\WinCC flexible Support\Utility" subfolder of the installation folder.

Principle

#### Additional packages available

<b>SIMATIC WinCC flexible Powerpacks</b>
WinCC flexible Standard to WinCC flexible Advanced
WinCC flexible Compact to WinCC flexible Advanced
WinCC flexible Compact to WinCC flexible Standard

Powerpacks can only be ordered as standalone license, including license key on USB memory stick.

<b>SIMATIC Software Update Service</b>
WinCC flexible Advanced Software Update Service
WinCC flexible Standard Software Update Service
WinCC flexible Compact Software Update Service

Each software update contract covers only one engineering station. For each software update contract, you will automatically receive all upgrades and service packs over a 12-month period.

<b>Documentation</b>
WinCC flexible Compact/Standard/Advanced User Manual
WinCC flexible Micro User Manual
WinCC flexible Communication User Manual

The printed documentation can be ordered individually.

<b>SIMATIC HMI documentation CD</b>
In 5 languages: English, German, French, Italian and Spanish. Contents: User manuals for WinCC flexible, ProTool, ProTool/Pro, ProTool/Lite, Panels, Panel-PCs, ProAgent, and for options Communication manuals Manuals for SIMATIC Panel PCs and Panels

The HMI documentation CD can be ordered separately.

## Licenses and license key

Any software package you purchase includes a specific user license and a corresponding license key. Software such as WinCC flexible Compact is activated by installing the corresponding license key.

A license key is available on a separate USB memory stick for activating the Engineering System and Runtime software products, the options, and the Powerpacks.

<b>NOTICE</b>
WinCC flexible will only run in demo mode if the license is missing.

## See also

License Keys and Authorizations (Page 30)

Non-licensed mode (Page 52)

Overview (Page 49)



# Index

## A

- Antivirus tools, 19
- Authorization, 30, 32, 35, 38
  - Working with the authorization, 38
- Authorization for options
  - HMI devices, 36
- Automation License Manager, 40
  - Parameters, 41

## C

- Change language
  - User rights, 53
  - Write permissions required, 53
- Changing
  - User interface language, 53
- Components, 10, 24
  - Installing, 24
  - Uninstalling, 24
- Custom installation, 11

## D

- Data backup, 38
- Defective license, 40
- Drivers, 73

## E

- Engineering System, 50
  - Starting, 50

## F

- Floating license, 31
- Full installation, 11

## H

- HMI device, 36

- Labeling strips, 73
- HMI device licensing
  - Not PC-based, 36

## I

- Installation, 9
  - Overview, 9
  - Requirement, 5
  - Selecting the edition, 8
  - SQL server, 23
- Installing, 20, 24, 27
  - Audit Viewer, 27
  - Components, 24
  - License, 20
  - Option, 20, 27
  - Powerpack, 29
- invalid license
  - with a time-zone change, 39

## L

- Labeling strips, 73
- License, 20, 30, 40, 74
  - defective, 40
  - Defective license, 40
  - Installing, 20
  - Starting without valid license, 33
  - Uninstalling, 46
- License key, 30, 74
- License Key, 38, 40
  - Faulty assignment by the license server, 33
  - Requesting from a license server, 9, 33
  - Working with license keys, 38
- License Key disk, 33
- License management, 30
- License Management, 40
- License Manager Panel Plugin, 36
- Licensing
  - General, 30

## M

- Minimum installation, 11

## N

- Non-licensed mode, 52
  - ES, 33, 52
  - HMI devices, 37
  - Runtime, 35, 52

## O

- OPC, 73
- Option, 26
  - Installing, 20, 27
  - uninstalling, 27
  - Uninstalling, 46

## P

- Parameters
  - Automation License Manager, 41
- Powerpack, 28, 29
  - Engineering System, 28
  - Installing, 29
  - Runtime, 28
- ProAgent
  - Installing, 11

## R

- Restore process
  - Authorization, 37, 39
  - License Key, 37, 39
- Rights
  - User rights, 8
- Runtime, 51
  - starting, 51

## S

- Scope of delivery, 73
- Selecting the edition
  - Installation, 8
- Single license, 31
- SQL server, 23
- Start menu, 49
- starting, 51
  - Runtime, 51
- Starting
  - Engineering System, 50
- Starting WinCC flexible
  - Write permissions required, 50
- System requirement, 5

## T

- ThinClient
  - Licensing, 37
- Trial license, 31

## U

- uninstalling, 27
  - Option, 27
- Uninstalling, 24, 44, 46
  - Components, 24
  - License, 46
  - Option, 46
  - User dictionary, 44
  - WinCC flexible, 44
- Upgrade license, 32
- User dictionary
  - Uninstalling, 44
- User interface language
  - Changing, 53
  - Selecting, 12
- User rights, 8
  - for language change, 53
  - When you first start WinCC flexible, 50

## W

- WinCC flexible
  - Uninstalling, 44
- Write permissions
  - for the initial start of WinCC flexible, 50